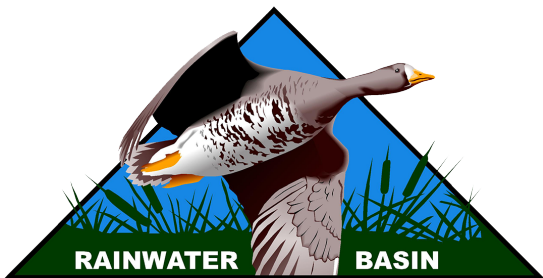


2022

RAINWATER BASIN JOINT VENTURE

Annual Report



JOINT VENTURE

ESTABLISHED 1992



Introduction

Playa Wetland Conservation Strategies and Accomplishments

Support for Private Lands Workgroup

Programmatic Flexibility

Watershed Restoration

**Water Development Fund
Central Table Playa Conservation**

RWBJV Partner Capacity for Playa Conservation

Playa Wetland Science & Technical Transfer Accomplishments

Playa Wetland Communication Accomplishments

Grassland Conservation Strategies and Accomplishments

Central Loess Hills Grassland Conservation Accomplishments

**Republican River/Blue River/Loess Canyons/Verdigris-Bazile
Drainage GFA Grassland Conservation Accomplishments**

RWBJV Partner Capacity for Grassland Conservation

**Grassland Science and Technical Transfer and
Accomplishments**

Grassland Communication Accomplishments

Income and Expenses

The Rainwater Basin Joint Venture (RWBJV) is a public-private partnership focused on wetland and grassland conservation in Nebraska’s mixed-grass prairie ecoregion. This geography is as varied as the migratory birds and resident wildlife found in this region. Nebraska’s Sandhills are the largest intact grassland in the world, while the Rainwater Basin Region’s (RWB) playa wetlands are scattered throughout a row-crop dominated landscape. Regardless of the landscape, the RWBJV partners find economically viable solutions that ensure conservation practices can be part of working farm and ranch operations. This is important as the RWBJV is 97% privately owned. These unique conservation solutions require a diverse and growing number of partners. The RWBJV partnership fosters relationships between landowners, government agencies, landowners/agriculture producers, non-government organizations, agriculture industry, and academic institutions to support habitat projects. These entities’ respective missions and purposes may differ, but they share an overarching commitment to conservation of the water, soils, habitat, and other resources that make this a special place for birds and people.

The RWBJV FFY 2022 Annual Operations Plan (AOP) provides a strategic framework that highlights priorities and focus for the partnership. The FFY 2022 AOP (October 1 - September 30) benchmarks are incremental steps that support partners in allocating resources to achieve the annual landscape objectives necessary to achieve the goals outlined in the RWBJV Implementation Plan.


Consistent with the habitat objectives outlined in the Implementation Plan, grasslands and wetlands were the focus of the FFY 2022 AOP. The FFY 2022 AOP highlighted acreage goals, capacity needs, science priorities, and limiting bottlenecks. This Annual Report provides an overview of the partnership accomplishments related to these benchmarks and significant partner contributions.

The FFY 2022 AOP highlights included leveraging funding to support four jointly funded positions. These positions provide a variety of skills including on-the-ground conservation delivery, communications, as well as research and monitoring. These individuals coordinate directly with the existing partner network to address bottlenecks and improve on-the-ground delivery. As a result of their support the partners were able to leverage \$5.8 million dollars and positively impact over 6,400 acres of playa wetlands and grasslands and 17,236 acres of grasslands through partner agreements and contracts. The partners also were able to impact 342,366 acres through the Environmental Quality Incentives Program (EQIP) grassland projects in the four priority grassland Geographic Focus Areas (GFAs).

The remainder of this Annual Report provides a more in-depth overview of accomplishments related to each strategy outlined for playa and grassland FFY 2022 AOP sections. Our work would not be possible without the contributions of major funding partners, including Ducks Unlimited (DU), National Fish and Wildlife Foundation (NFWF), Natural Resources Conservation Service (NRCS), Nebraska Environmental Trust (NET), Nebraska Game and Parks Commission (NGPC), North American Wetlands Conservation Act (NAWCA), and the U.S. Fish and Wildlife Service (USFWS). In particular, the NET has been a mainstay in the funding for our on-the-ground habitat work since the partnership’s earliest years. The non-federal match provided by these grants is essential to receiving federal grant funding, making NET invaluable to the RWBJV and other conservation groups across Nebraska.



Playa Wetland Conservation Strategies and Accomplishments




Since its inception, the RWBJV has been focused on conservation of playa wetlands in the RWB. The 2013 RWBJV Implementation Plan outlines explicit conservation benchmarks for the RWB, Central Table Playa Wetland Complex (CTP), and to a lesser extent, the Southwest Playa Wetland Complex. There were six strategies identified in the FFY 2022 AOP to achieve desired playa conservation.

These strategies centered around:

- Supporting the Private Lands Workgroup (PLWG)
- Maintaining programmatic flexibility
- Increasing watershed restoration activities
- Building the water development fund
- Generating new opportunities in the CTP
- Maintaining Agriculture Conservation Easement Program (ACEP) delivery capacity



Support for Private Lands Workgroup



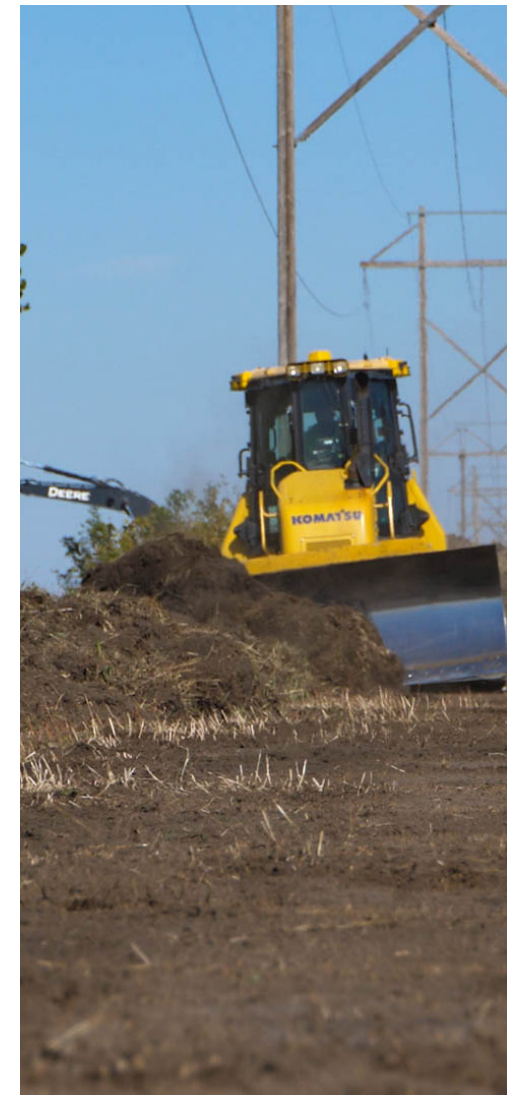
The PLWG is the longest standing RWBJV workgroup. It provides an open forum to allow partners to develop field level solutions to maximize project delivery. In 2022, the PLWG met virtually three times and then returned to two in-person meetings. The monthly coordination calls were instrumental in completing all of the projects that allowed the RWBJV to close out five NET grants. Numerous communications, marketing, and outreach materials were also developed for the PLWG. These materials will be expanded on in the communications section.

PLWG support and accomplishments:

- Three virtual PLWG meetings along with monthly RWBJV Project calls were held. These virtual meetings resulted in 20 new private lands projects, impacting over 940 acres.

Projects were completed through both USDA programs and non-USDA partner programs:

- Three private land projects were completed impacting 117 acres. These projects represent a significant increase in the number of private lands projects completed outside of USDA programs. These projects were all major restorations requiring a significant number of acres to be cleared of trees, multiple concentration pits to be filled, and sediment removed. In total, over 100,000 cubic yards of material were removed as part of these restorations.
- In 2022, grazing infrastructure was constructed on 10 properties (535 acres).



Programmatic Flexibility

The RWBJV worked with NRCS and Farm Service Agency (FSA) to secure unique programmatic opportunities within the United States Department of Agriculture (USDA) Farm Bill Programs. In addition to Farm Bill programs, the partners successfully leveraged funds from NFWF, NET, and NAWCA to complete wetland restoration and establish upland buffers. This leveraged approach is providing millions of dollars to increase programmatic flexibility.

Completed restoration on three Agriculture Land Easements and closed four Wetland Reserve Enhancement Program (WREP) easements to complete goals and objectives outlined in the Regional Conservation Partnership Program to positively impact 420 acres.

Coordinated with FSA to hold a sign-up for Migratory Bird State Acres for Wildlife Enhancement (SAFE) Conservation Reserve Program (CRP). Received 36 applications between the three wetland complexes. A total of 18 applications were accepted, with 800 acres being enrolled.

Nebraska Environmental Trust Grants

- Closed seven NET grants. These grants provided \$1.7 million in NET funds that were leveraged with \$5.7 million in matching funds over the life of the grants. Restoration and enhancement work completed on 7,360 acres.
- Four new Nebraska Environmental Trust grants have been submitted for \$1.3 million to continue to deliver outside-the-box conservation solutions.

DU is managing multiple NAWCA grants that are being matched with RWBJV NET grants. Sufficient match from completed NET grants to submit another \$1.6 million NAWCA.

The RWBJV Implementation plan targets ponding in 45% of RWB wetlands at goal under-average conditions. Primary strategies include on-site wetland restoration in conjunction with off-site watershed restoration.

The RWBJV partners secured millions of dollars to implement these hydrologic restoration objectives, including:

- Direct mailing as part of the EQIP Wildlife Incentives Nebraska fund pool.
 - Mailed postcards to 2,500 landowners with watershed modifications. Contracts developed with 11 landowners in watersheds of 10 public wetlands and one private wetland. Over \$135,000 of EQIP funds committed to projects.
- Partners filled an additional 22 irrigation reuse pits with a combination of NET and partner funds.
- Bluewing, White Front, Marsh Duck, Sacramento Wilcox, and Southeast Sacramento Wildlife Management Areas (WMAs) and Atlanta, Cottonwood, Mallard Haven, Macon Lakes, Nelson, Peterson Basin, Prairie Dog, and Ritterbush Waterfowl Production Areas (WPAs) were benefited from watershed restoration work. In addition to these public wetlands, two private wetlands enrolled in conservation programs had pits filled in their associated watershed. A total of 5,240 wetland acres benefited from these projects. Eight of these properties (4,760 acres) have had pit fills completed in the watersheds previously while five of the properties (480 acres) had never had any watershed restoration work completed in the past.
- Partners worked to improve wetland function by implementing within basin sediment and fill removal at Atlanta, Cottonwood, Funk, Linder, Remmenga, and Smith (WPAs).
 - These efforts resulted in removing over 587,000 cubic yards of sediment and fill from the wetlands and leveraged over \$1,400,000 partner funds.



Water Development Fund

The RWBJV Water Plan recognizes the importance of supplemental water deliveries to achieve the 45% ponding benchmark. To offset the Operations and Maintenance costs for supplemental water deliveries, the RWBJV Water Endowment was established. This fund is financially managed by DU, but the partners collectively help focus expenditures on public and private lands for both spring and fall habitat.



Water development fund accomplishments to-date:

- DU staff have successfully established the endowment and secured \$500,000 in principle, with \$800,000 in commitments.
 - New commitments are from DU donors and foundations.
- In 2022, \$25,000 was provided to USFWS and NGPC for spring and fall pumping.
 - 36 properties received supplemental water in the fall.
 - 18 properties received supplemental water in the spring.
 - 750 acres of additional flooded habitat provided through endowment contributions.
- Coordination meeting has been held and with priorities outlined for both public and private lands for the fall of 2022 and spring of 2023.

Central Table Playa Conservation

The CTP are an often-overlooked resource. The RWBJV Implementation Plan highlights a goal of 2,000 acres of playa wetlands enhanced through voluntary incentive-based conservation programs. The RWBJV has included CTP wetlands in the WREP and SAFE proposals to provide new opportunities for landowners and increase enrollment. Accomplishments to date:

- First applications were received for both SAFE and WREP during 2022. Projects will impact over 125 acres of playa wetlands.

RWBJV Partner Capacity for Playa Conservation

Project funds (Financial Assistance-FA) are seldom limiting; however, staff to provide the Technical Assistance (TA) that facilitates on-the-ground conservation delivery is a continual bottleneck. The RWBJV Partners have leveraged agency, foundation, and grant funding for shared positions to increase delivery capacity. The RWBJV partners currently support four shared positions. These positions address a variety of conservation bottlenecks including communication, habitat management, and restoration.

The shared positions and accomplishments are outlined below:

RWBJV Communications Assistant. This position generated multiple social posts on a variety of platforms (Facebook, Instagram, etc.), managed the RWBJV eNewsletter and RWBJV Partnership Update. The RWBJV webpage now includes specific landing pages for the WREP and SAFE. Over 10,000 letters and post cards were sent to landowners to promote ACEP, CRP, EQIP, SAFE, and WREP. Position funded by CPNRD, NRCS, and RWBJV. Marketing and outreach campaigns were expanded to include radio and social media.



RWBJV Habitat Specialist. Coordinated with CPNRD Easement Specialists, NRCS Easement Team, Public Land Managers, and private landowners to develop a prescribed fire contract for 3,871 acres on 29 properties, contracted for tree removal (19 properties – 1,110 acres), and herbicide treatments on 35 properties impacting 1,125 acres. Worked with 10 landowners to establish grazing infrastructure and developed agreements with three landowners for restoration outside of USDA programs. Position funded by NGPC, NRCS, and RWBJV.



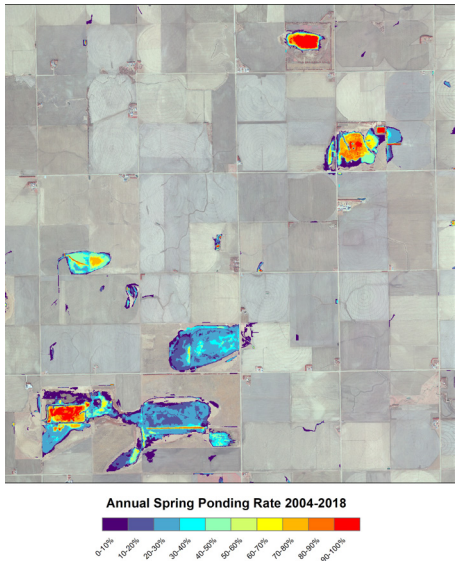
CPNRD Easement Habitat Specialists. Supported BE-Team in completing 15 applications, developed 31 Compatible Use Authorizations, and supported monitoring at 231 sites.

CPNRD Prescribed Fire Specialist hired and has developed 5 burn plans for landowners with NRCS easements to ensure prescribed fire can be completed to help control woody encroachment. Funding leveraged by CPNRD, NRCS, and RWBJV for position.

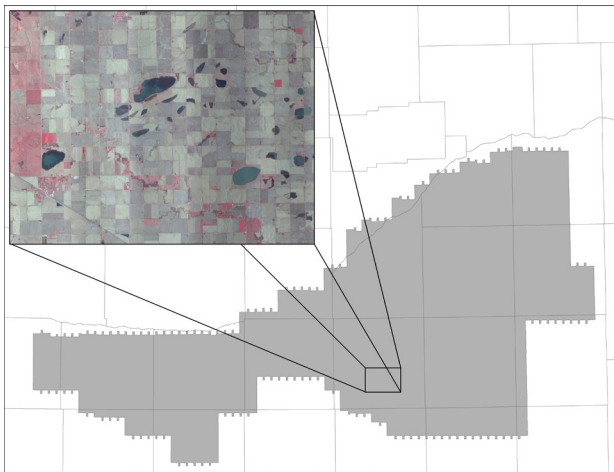


Playa Wetland Science and Technical Transfer Accomplishments

The RWBJV partnership strives to use the best science available to guide conservation investments and achieve the greatest return on conservation investment. Since 2004, the RWBJV has invested in the Annual Habitat Survey (AHS) for the RWB and more recently (2017) a complimentary Waterfowl Survey (WS). These datasets are providing new insights into contemporary habitat distribution, waterfowl response to local and landscape habitat variables, and identification and prioritization of future wetland and watershed restoration actions.



Significant accomplishments for FFY 2022 include:



- Updated all watershed maps for public areas and all private lands projects enrolled in long-term (> greater than 30 years) conservation programs.
- Coordinated with USFWS Habitat and Population Evaluation Team (HAPET) to collect the 19th year of AHS data. Data has been processed and integrated into the long-term dataset. Spatial queries of the data have been used to focus marketing and outreach to eligible landowners.

- Completed sixth year of the waterfowl survey working with United State Geological Survey (USGS) scientists to analyze data and generate Decision Support Tools (DSTs) to prioritize wetland restoration, enhancement, and management.
- Western Basin Recharge Project groundwater monitoring network has been fully established. The five WPAs (Cottonwood, Funk, Johnson, Linder, and Victor Lakes) have been instrumental to support recharge monitoring. Preliminary results suggest one acre of playa wetlands can recharge 1.14 million gallons per acre when ponding water for a 30 day hydroperiod annually. Return stream flow contributions to the Platte River will be approximately 40% of this recharge in a 15-year period. Expanded monitoring project to Upper Big Blue Natural Resources District to gain insights into eastern basin recharge rates.
- Playa Research Symposium took place in October. The forum included 18 presentations on relevant research and planning efforts along with a set of facilitated breakout sessions to help identify key uncertainties and guide future research.
- Hired grazing consultant to complete landowner interviews of producers that have NRCS easements. First attempt to get producer perspectives on grazing plans and if the TA and guidance is resulting in grazing that fits in the producer's operation and improves habitat conditions.





Playa Wetland Communication Accomplishments

The RWBJV has struggled to implement our communication plan in the past. The recently hired RWBJV Communication Assistant has achieved a significant number of benchmarks. These include:

- Completed FFY 2022 Annual Report highlighting the RWBJV accomplishments.
- Supported Platte Basin Timelapse in development of playa wetland video highlighting conservation of these unique resources.
- Hosted three ACEP workshops.
- Completed 3 marketing campaigns to support ACEP signup (2) and SAFE enrollment (1).
- Supported three habitat tours for landowners and Natural Resource professions. Included coach bus tour with 35 landowners highlighting cover crops and wetland grazing. Part of new and emerging partnership with America Farm Journal.
- Three new fact sheets and banners developed for landowner venues.
- Developed three videos highlighting prescribed fire, wetland restoration, and wetland grazing. Videos were shared through social media channels and YouTube.
- Developed Habitat Happenings stories to highlight conservation opportunities for wetlands and grasslands. Stories routinely highlighted in NRD newsletters. Primary audiences are located in Tri-Basin, Upper Big Blue, and Central Platte NRD.
- Social media platforms developed for RWBJV including Facebook and Instagram.
- Developed letters, postcards, and infographics that highlighted ACEP, CRP, EQIP, WREP, and other partner programs. Over 10,000 landowners, farm operators, and ranch managers were contacted with letters, postcards, and other promotional materials.

Grassland Conservation Strategies and Accomplishments

The 2013, the RWBJV Implementation Plan set grassland conservation benchmarks. In 2015, the RWBJV received its first NFWF grant for work in the Sandhills. This grant has been replicated to increase FA and TA to support grassland conservation in the Central Loess Hills, Central Platte River, Republican/Blue River Drainages, and Verdigris Bazile drainage GFAs.



Seven strategies identified in the FFY 2022 AOP centered around:

Support Sandhills grassland conservation efforts through increased project funds (FA) and science support to prioritize conservation efforts.

Improve grassland habitat in the Central Loess Hills.

Engage partners to identify RWBJV's role in the Republican River/Blue River Drainages/Loess Canyons and Verdigris – Bazile Creek Drainages.

Sandhills Grassland Conservation Accomplishments

Nebraska's Sandhills are an iconic landscape containing the largest intact grassland system in the world. This landscape is over 97% privately owned, requiring projects to be developed at the ranch level and scaled-up through neighbor buy-in. The Sandhills Task Force is a locally led partnership between the ranching community and conservation entities (DU, NGPC, NRCS, Pheasants Forever, The Nature Conservancy, U.S. Forest Service, and USFWS). The RWBJV continues to provide TA funding and leverage grant funds to support this partnership.



Sandhills Grassland Conservation Accomplishments for FFY 2021:

Secured new NFWF grant for \$215,250.

- Purchased two prescribed mobile burn units and have transferred the trailer titles to Middle Niobrara NRD (MNNRD) and Nebraska Grazing Lands Coalition. All equipment has been ordered and should be received by end of December 2022.
- \$125,000 committed in three contracts to clear 23,000 acres on Samuel R. McKelvie National Forest.
 - RFP process used to solicit bids from local contractors. Have gone from three contractors to nine contractors on the Sandhills bid list.

Closed out 2018 NFWF grant.

- Partners leveraged \$1.5 million dollars to positively impact 67,500 acres of private lands. This is roughly 245% above grant goals for acres and matching funds.
 - 40,000 acres of mechanical removal of eastern red cedar.
 - 20,000 acres of grazing infrastructure.
 - 7,500 acres of prescribed fire.

Submitted America the Beautiful NFWF grant for \$1.5 million.

- Proposal includes:
 - Lord Lakes wetland restoration.
 - 40,000 acres of tree removal on Samuel R. McKelvie National Forest.
 - 28,875 acres of tree removal on private lands within 5-miles of Samuel R. McKelvie National Forest.
 - 6,750 acres of eastern red cedar control on three Wildlife Management Areas.

Initiated first projects (2,000 acres) with the World Wildlife Fund for grassland restoration in the Sandhills.

Working Lands for Wildlife experiences most successful year.

- 22 projects impacting 67,000 acres. Focus remains in the eastern Sandhills with a shifting emphasis towards low and ultra-low density tracts to maintain grassland cores.

Central Loess Hills Grassland Conservation Accomplishments

The RWBJV Central Loess Hills are a patchwork of highly productive agriculture table lands that sit on rugged grasslands that transition into the Loup River floodplains. NGPC's State Wildlife Action Plan (SWAP) highlights the importance of this landscape for rare and declining species as well as the mixed grass prairie communities.



Grassland Conservation Accomplishments for FFY 2022 include:

- Hosted Loup River Prescribed Fire Training Exchange (TREX); however unable to implement prescribed fire as conditions were dry and unable to receive burn permits.
 - Developed prescribed fire plans for 20 landowners.
 - 20 wildland firefighters, 25 volunteer firefighters, and 45 landowners participated in the event. It provided real-world training on how prescribed fire can be implemented.
- Received NET and NFWF grants to support prescribed fire in the Central Loess Hills.
 - Grant funds will provide \$700,000 to Expand Lower Loup NRD
- Range Program to support:
 - Mechanical removal of eastern red cedar.
 - A Prescribed Fire Specialist to work with landowners to develop burn plans.
 - Purchase prescribed fire equipment.
 - Provide cost-share for grazing deferment and prescribed fire preparation.
- Submitted 2 additional NET grants to support prescribed fire in the Central Loess Hills.
 - TREX continuation
 - Cost-share for removal of remnant cedar trees that are not impacted by prescribed fire or wildfires. Effort to eliminate seed sources from treated areas.
- Completed first grassland restoration through World Wildlife Fund initiative.

Republican River/Blue River/Loess Canyons/Verdigris-Bazile Drainage GFA Grassland Conservation Accomplishments



The RWBJV Central Loess Hills are a patchwork of highly productive agriculture table lands that sit on rugged grasslands that transition into the Loup River floodplains. NGPC's State Wildlife Action Plan (SWAP) highlights the importance of this landscape for rare and declining species as well as the mixed grass prairie communities.

Grassland accomplishment in these landscapes include:

- Coordinated with CPNRD, Lower Loup NRD (LLNRD), Middle Republican NRD (MRNRD), Tri-Basin NRD (TBNRD), and Twin Platte NRD (TPNRD) to include the Republican River Drainage and Loess Canyons in NFWF and NET grant applications.
 - o Both grants awarded to provide approximately \$60,000 to each NRD to impact 4,500 acres over the next three years. Will help significantly expand the range programs in these NRDs.
- Cost-share will be available for:
 - o Mechanical removal of eastern red cedar.
 - o A Prescribed Fire Specialist to work with landowners to develop burn plans.
 - o Grazing deferment and prescribed fire preparation.
 - o A burn crew has been contracted to provide staff and equipment to assist landowners in implementation of prescribed burns.
- First grassland restoration completed in the Verdigris-Bazile drainages through World Wildlife Fund initiative.

RWBJV Partner Capacity for Grassland Conservation

Grassland conservation has not been a priority for most conservation partners. New data highlighting grassland conversion rates and invasion by eastern red cedar has caused natural resource agencies to reallocate resources to grassland conservation. The RWBJV partners are collectively working to identify grassland conservation bottlenecks and increase both FA and TA. Prescribed fire is the most cost-effective management tool but is most limited.

RWBJV accomplishments to address these bottlenecks include:

- TNC Burn Boss. This position was funded through a NET grant awarded to TNC and a NFWF grant awarded to the RWBJV. The RWBJV supported the Nebraska Grazing Lands Coalition with administering a NFWF grant to provide continued support.
 - o 6,000 acres treated in the last three years with 60,000 acres planned for the upcoming three years.
- CPNRD Prescribed Fire Specialist hired. Individual has completed 10 burn plans in his first four months for landowners with EQIP contracts. Funding leveraged by CPNRD, NRCS, and RWBJV. Additional funds in the NET and NFWF grants support this position through the next three years.
 - o Position will support landowners in the CPNRD, LLNRD, MRNRD, TBNRD, and TPNRD, to develop burn plans and ensure prescribed fire contracts can be completed through local burn associations or by the landowners with assistance from the contracted burn crews.



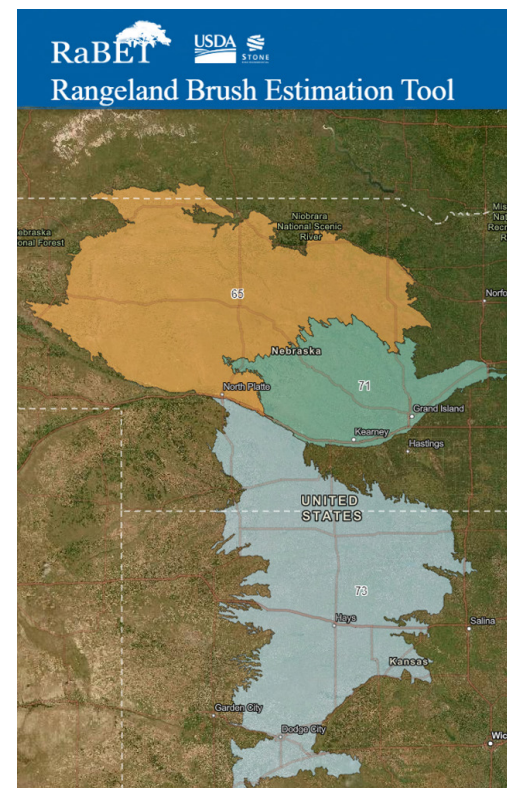
Grassland Science and Technical Transfer and Accomplishments



The RWBJV invested significantly in 2022 to improve the biological foundation that is used to guide our conservation investments. These datasets are a cornerstone for the revision of the RWBJV Landbird Plan. This plan outlines habitat benchmarks for each RWBJV GFA necessary to support target populations of landbirds.

Significant accomplishments for FFY 2022 include:

- Revised RWBJV Landbird Plan with population objectives and habitat restoration, enhancement, and management goals for each RWBJV GFA.
- Collected field data (50 sample blocks) and 10-cm color infrared aerial photography (5,000 acres) within the Major Land Resources Areas 65 (Sandhills), 71 (Central Loess Hills), and 73 (Republican River/Blue River/Loess Canyons GFA). Data has been used to calibrate RaBET to streamline contract development for mechanical removal of ERC in these GFAs.
- Integrated all available partner projects into a seamless projects database. Outcome based monitoring tool now available to track dollars invested, acres impacted, and estimated number of priority birds impacted by conservation delivery projects.
- Conservation Effects Assessment Program (CEAP) and NFWF reports have been developed highlighting RWBJV partnership contribution to grassland conservation objectives for USDA and NFWF Business Plans. Reports have been used to secure additional conservation investments.



- Developed Grassland Bird Conservation Areas (GBCAs) for priority at the State, RWBJV, and GFA levels to help prioritize grassland conservation. GBCAs generated from the abundance models developed for the RWBJV Landbird Plan highlighting geographies that positively impact the greatest number of priority species.
- Hired consultant to complete landowner interviews to understand landowner perceptions of programs and practice adoption. Providing insights into opportunities to improve TA to ensure landowner success in adoption and implementation of grazing and brush management practices.

Grassland Communication Accomplishments



The RWBJV has significantly increased our communication efforts to landowners and ranch managers regarding conservation opportunities. These include:

- Developed letters, postcards, and infographics that highlighted CRP, EQIP, and WLFW program options to producers in the Sandhills and Central Loess Hills. Over 50,000 letters, postcards, and other promotional materials were sent to eligible landowners and farm operators in the Central Loess Hills, Republican River Drainage, Sandhills, and the Verdigris-Bazile.
- Webpage has new landing pages for each GFA, highlighting the different conservation opportunities.
- Hosted three landowner meetings in the Sandhills in collaboration with University of Nebraska Extension and Nebraska Cattlemen to highlight the threats of eastern red cedar and the opportunities address woody invasion.
 - o Over 160 landowners participated.

INCOME AND EXPENSES

for Federal Fiscal Year Ending September 30, 2022

FUNDING

U.S. Fish and Wildlife Service Allocation	\$	502,767.00
Grants		
Nebraska Environmental Trust	\$	1,178,811.88
Other Grants and Funding Awards	\$	4,179,139.62
Total Grants and Other Funding	\$	5,357,951.50
Total Available Funding	\$	5,860,718.50

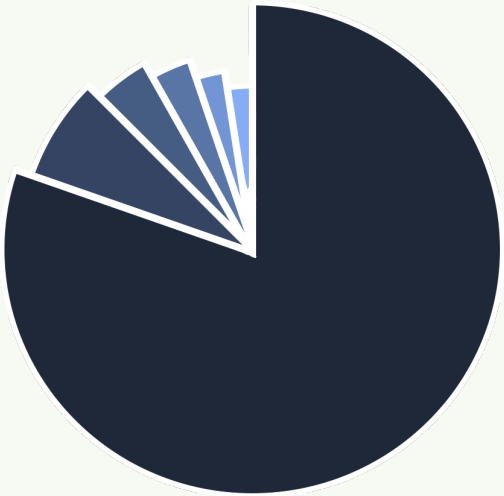
EXPENSES

Regional Administrative Support	\$	28,878.00
Coordination	\$	351,488.66
Communication	\$	101,443.18
Planning	\$	61,359.66
Monitoring, Evaluation, Research	\$	185,480.01
Project Development & Implementation	\$	5,132,068.99
Total Expenses	\$	5,860,718.50



U.S. FISH AND WILDLIFE
SERVICE FUND ALLOCATION

- 33% Coordination
- 33% Project Development & Implementation
- 15% Monitoring, Evaluation, Research
- 11% Planning
- 8% Regional Administrative Support
- 0% Communication



PARTNERSHIP FUNDING

- 87% Project Development & Implementation
- 6% Coordination
- 3% Monitoring, Evaluation, Research
- 2% Communication
- 1% Planning
- 1% Regional Administrative Support



Photo: Cortney Schaefer | RWBJV



Photo: RWBJV



Photo: RWBJV



Photo: RWBJV



Photo: RWBJV



Photo: RWBJV



Photo: NPPD



Photo: RWBJV



Photo: RWBJV



Photo: RWBJV



Photo: RWBJV



Photo: Cortney Schaefer | RWBJV

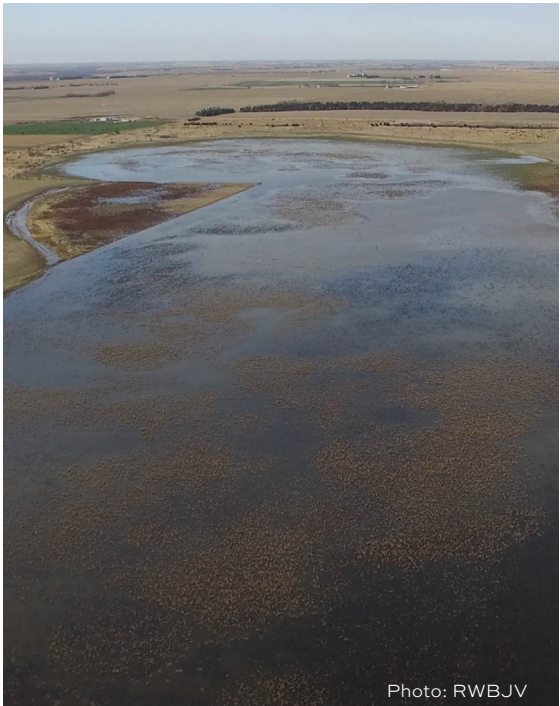


Photo: RWBJV



Photo: Andy Bishop | RWBJV



Photo: RWBJV



Photo: Platte Basin Timelapse

RAINWATER BASIN JOINT VENTURE

PARTNERS INCLUDE



RWBJV.ORG