

# Land Trades: A Win-win for Producers and Wetland Conservation

John Denton

NE Manager of Conservation Programs

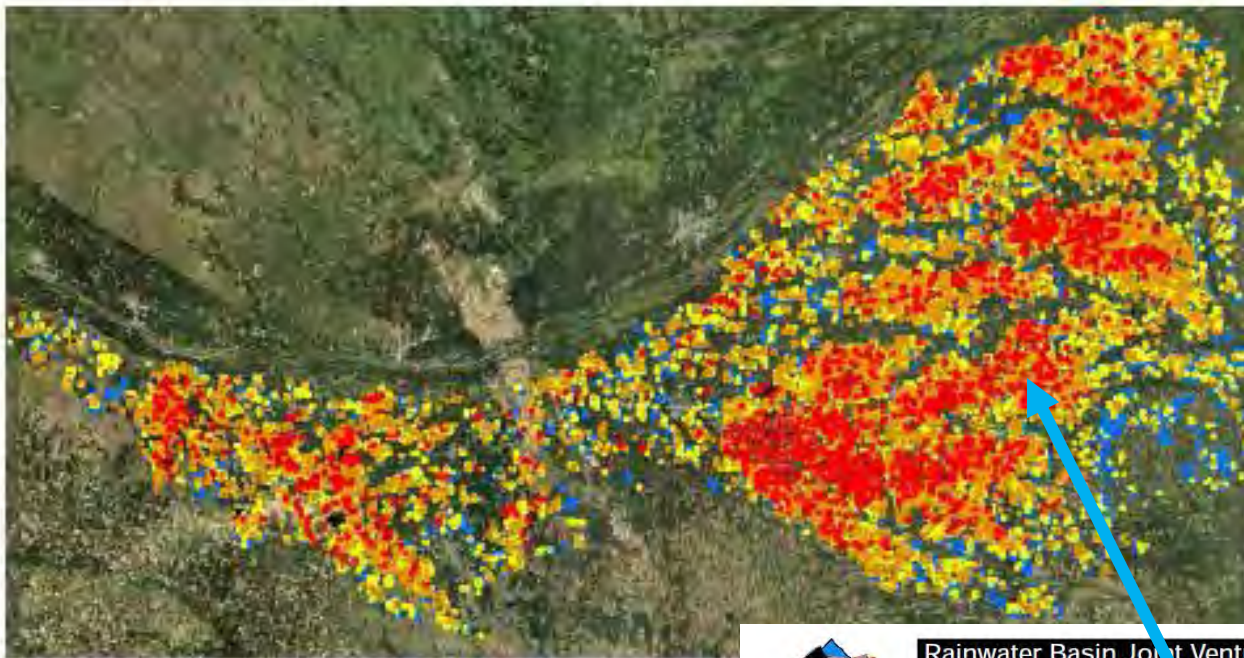
Ducks Unlimited, Inc.

Certified Wildlife Biologist ®



1. Wetlands America Trust owns 4-5,000 ac in Nebraska
2. Majority of our lands are in the Rainwater Basin, a priority
3. Primarily interested in spring migration habitat
  - Playa wetlands
  - Class III or worse soils (Massie, Scott, Fillmore, some Butler)
4. We continue farming upland portions, which are irrigated
5. Trades are conducted on a value for value basis based on appraisals
  - Boot money
  - We pay for appraisals
6. We are a trade partner for wetland owner willing to part with productive cropland
7. We also have numerous pasture tracts
8. We will purchase wetlands





## Rainwater Basin Joint Venture

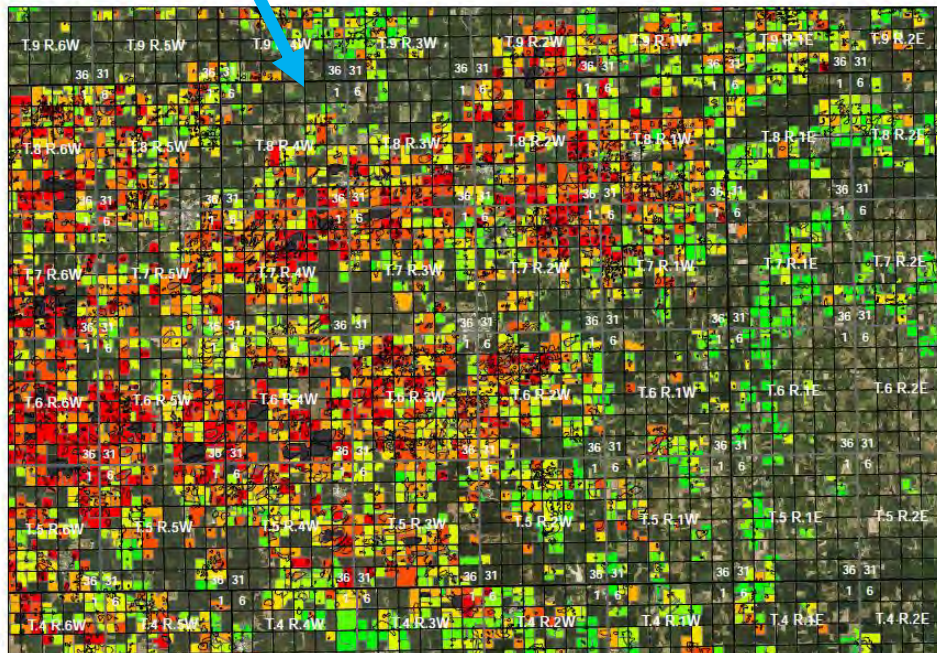
### Fillmore

#### Legend

- County Boundary
- Township
- Section
- Historic Wetland Footprint
- Long Term Conservation Areas

#### Easement Score

- 145 - 245
- 130 - 145
- 120 - 130
- 110 - 120
- 100 - 110
- 90 - 100
- 80 - 90
- 70 - 80
- 55 - 70
- 15 - 55

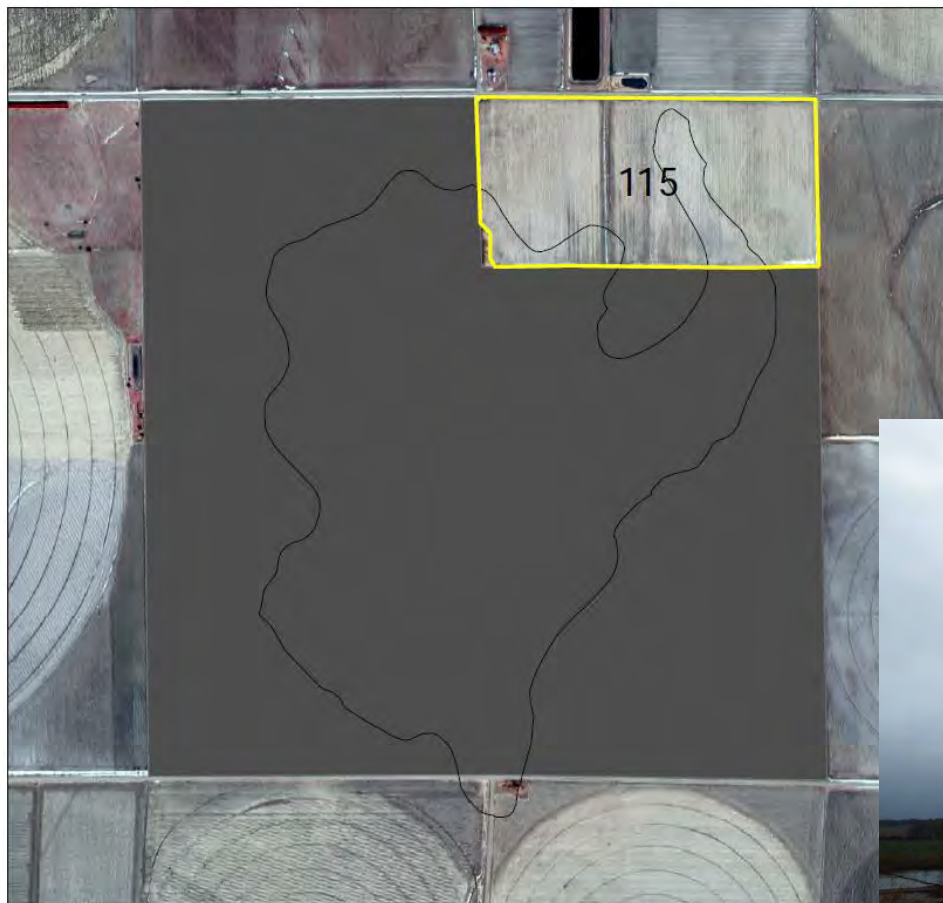






Rainwater Basin Joint Venture

Cottonwood WPA



Legend

- Historic Wetlands
- Public Areas

Roundout Score

- 133 - 170
- 118 - 132
- 98 - 117
- 83 - 97
- 40 - 82





Rainwater Basin Joint Venture

Real WPA



0 0.075 0.15 0.3 0.45 Miles

Tradeland/Cropland 90 ac

Fence and Grass

Pit Fill

Real WPA

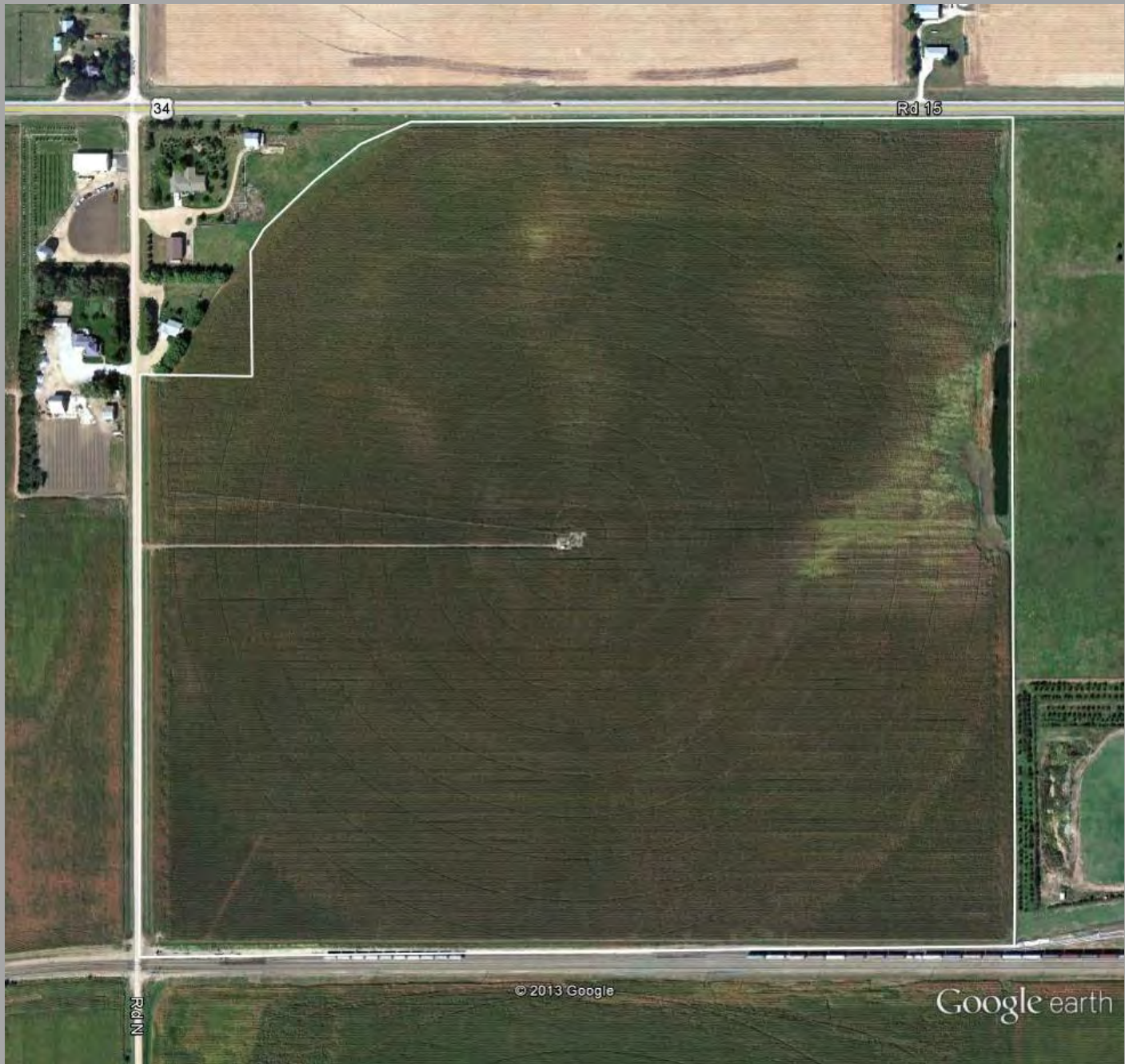
Wetland Footprint











34

Rd 15

Rd N

© 2013 Google

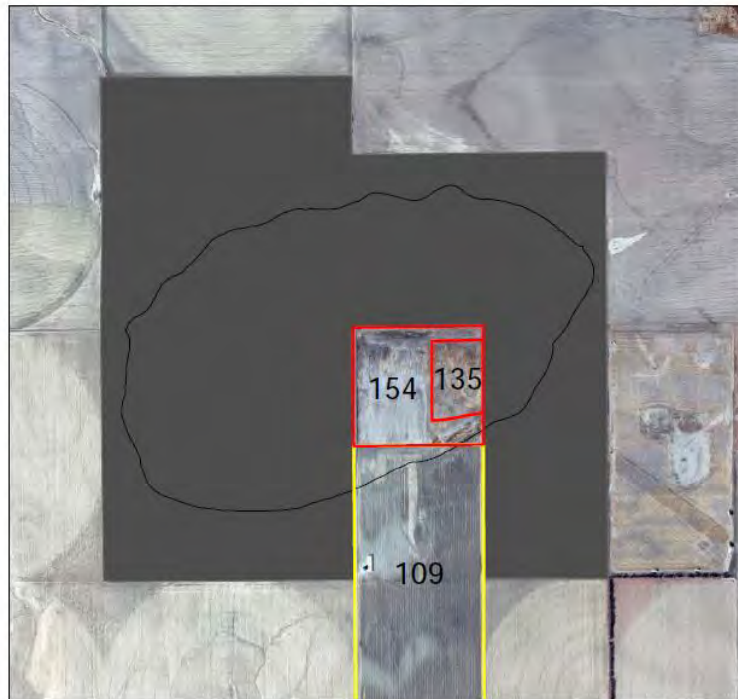
Google earth





## Rainwater Basin Joint Venture

### Smith WPA



#### Legend

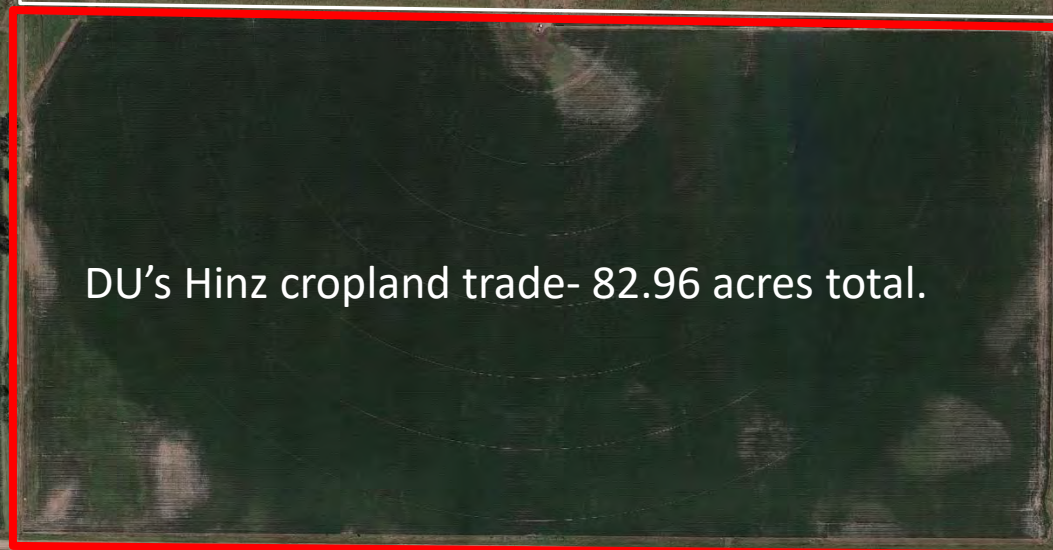
- Historic Wetlands
- Public Areas

#### Roundout Score

- 133 - 170
- 118 - 132
- 98 - 117
- 83 - 97
- 40 - 82

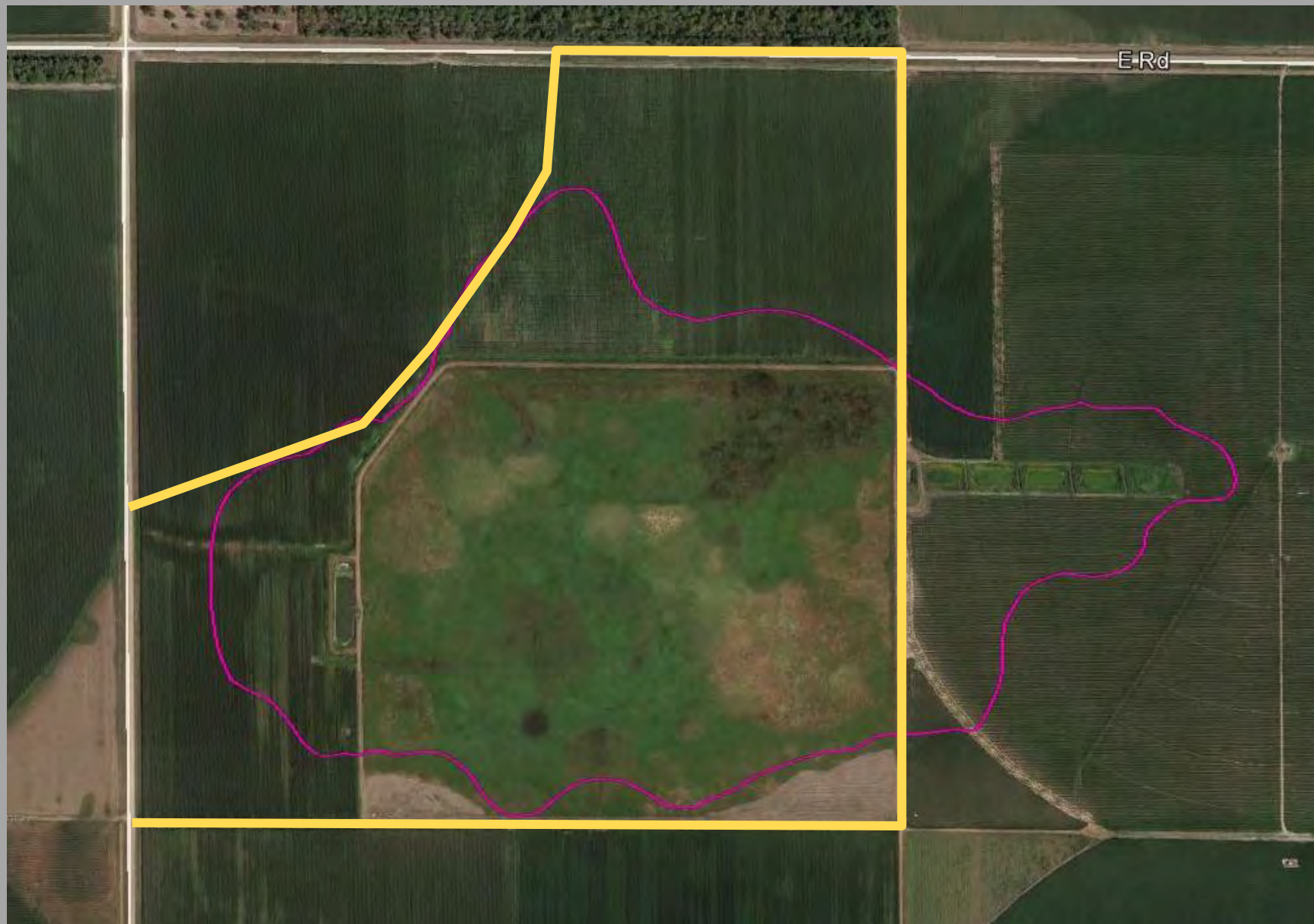






DU's Hinz cropland trade- 82.96 acres total.

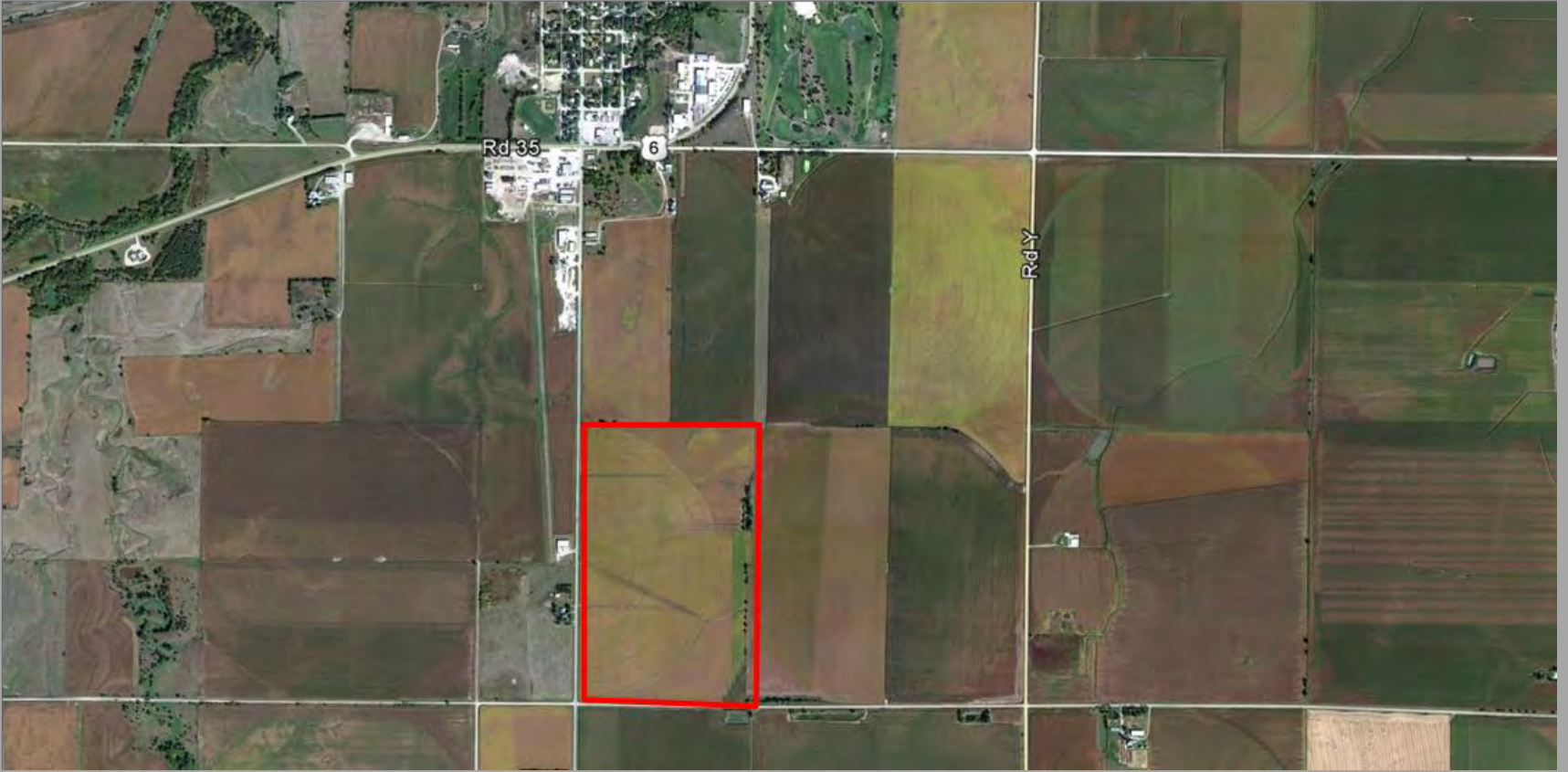




E-Rd







SSURGO | ne137 | 0.41 seconds | 0.25 cache ratio | BBOX:(-99.5348, 40.4949) (-99.4966, 40.5115) | 1483 acres



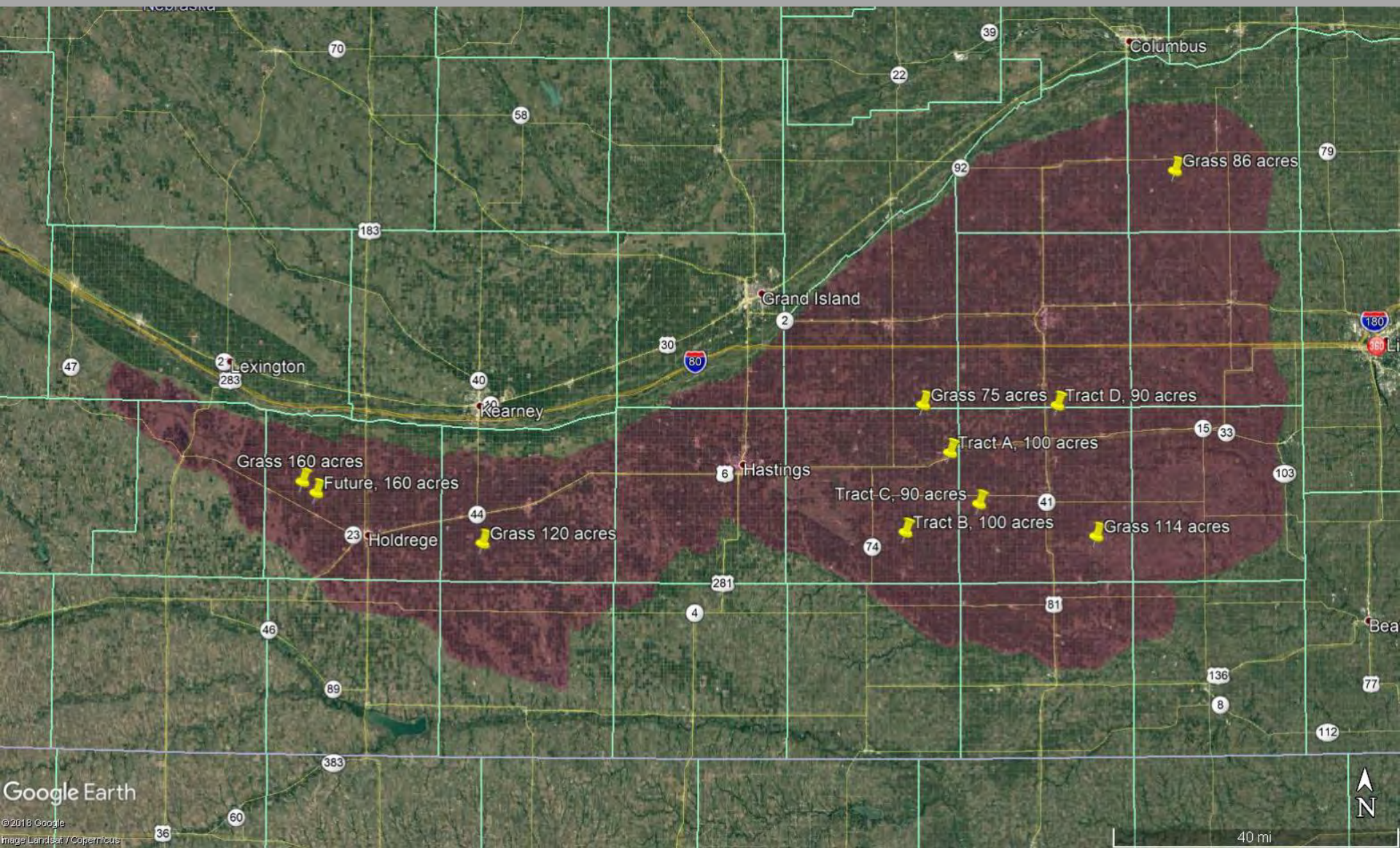
Google earth





- 4 grassland (i.e. Pasture) tracts have new fence and 3 have livestock wells and tanks
- 160 acres in Phelps County, 121 acres in Phelps County, 86 acres in Butler County, and 114 acres in Fillmore County







# CONCLUSIONS

- DU is a willing trade partner to obtain RWB wetland acres, which are usually the least productive portions of a producer's operation
- Producers obtain quality, irrigated farm land from DU on a value for value basis to keep that land in production and from being developed
- The wetlands obtained by DU are restored, which improves water quality, aquifer recharge, and wildlife habitat

# QUESTIONS?

