



Migratory Bird, Butterfly and Pollinator SAFE

Migratory Bird SAFE

Presentation Overview

- What Is a Playa?
- SAFE Overview
 - Background
 - Conservation Reserve Program (CRP) Requirements
 - Reverse Auction
- Playa Restoration
- Project Examples
- Other Partner Programs
 - Rainwater Basin Joint Venture
 - U.S. Fish and Wildlife Service
 - Nebraska Game and Parks Commission
 - Ducks Unlimited
 - Pheasants Forever

Migratory Bird SAFE

What Is a Playa?

- Description
- Services



Migratory Bird SAFE

What Is a Playa?

Description

- Formation
- Soils
- Function

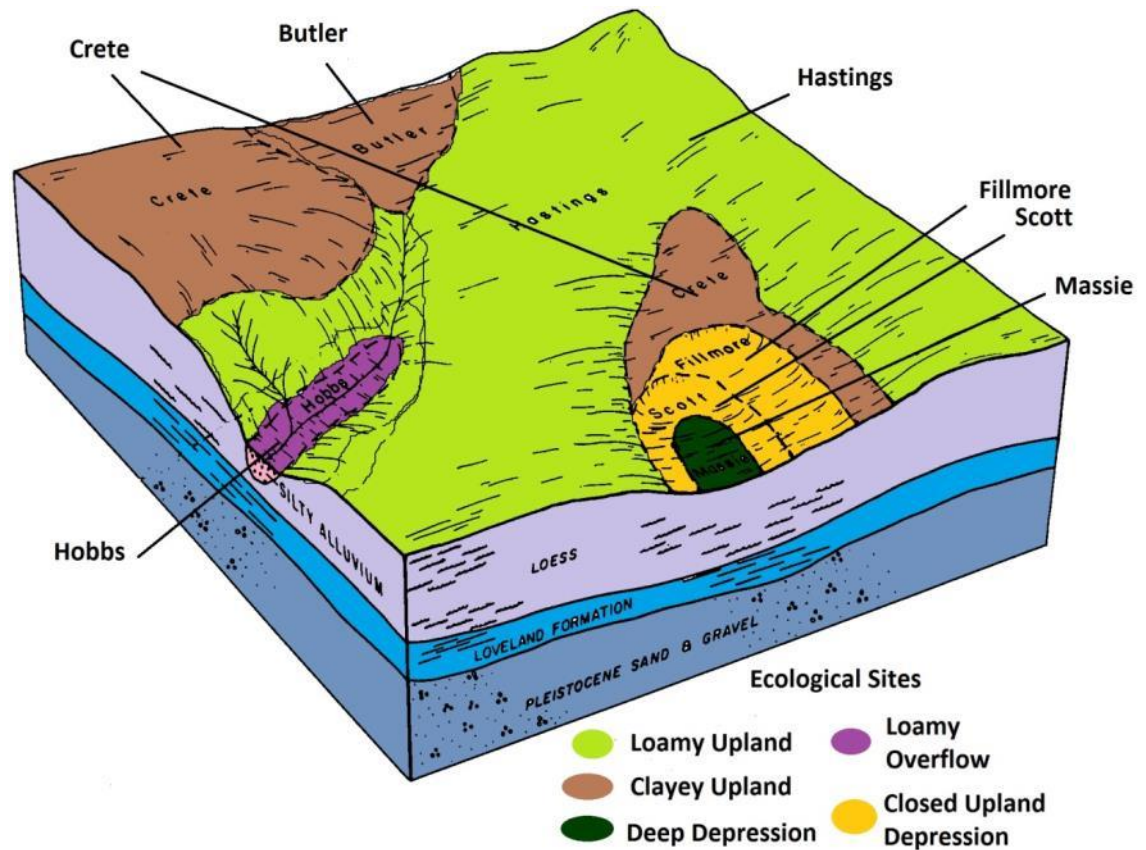


Migratory Bird SAFE

What Is a Playa?

Description

- Formation
- Soils
- Function



Migratory Bird SAFE

What Is a Playa?

Description

- Formation
- Soils
- Function



Feb 2008

June

Rainwater Basin Wetlands are ephemeral, and pond water as a result of precipitation & surface runoff



April

September



Migratory Bird SAFE

What Is a Playa?

Services

- Wildlife
- Recreation
- Groundwater Recharge/Nutrient Cycling
- Forage Production

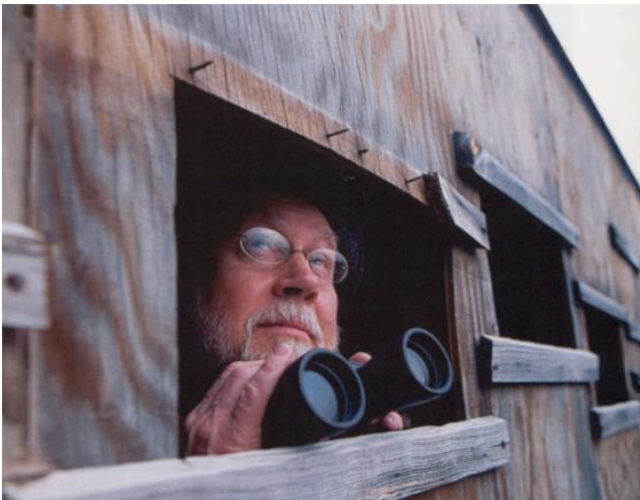


Migratory Bird SAFE

What Is a Playa?

Services

- Wildlife
- Recreation
- Groundwater Recharge/
Nutrient Cycling
- Forage Production



Migratory Bird SAFE

What Is a Playa?

Services

- Wildlife
- Recreation
- Groundwater Recharge/Nutrient Cycling
- Forage Production



Migratory Bird SAFE

What Is a Playa?

Services

- Wildlife
- Recreation
- Groundwater Recharge/Nutrient Cycling
- Forage Production



Migratory Bird SAFE

Background

- 2014 – Multi-State SAFE proposed by:
 - Playa Lakes Joint Venture
 - Rainwater Basin Joint Venture
- January 2017 - Authorized FSA National Office
- Notice CRP-818
 - Kansas – 10,000 acres
 - Nebraska – 10,000 acres
- February 17, 2017 – Notice CRP-825, Migratory Bird SAFE Project Approval



Migratory Bird SAFE

Practice Development Drivers

- Economic opportunity
- Food & habitat opportunity for wildlife
- Recharge Ogallala Aquifer
- Increase pollinators in buffers
- Focus – Playa Complexes



Migratory Bird SAFE

Signup Process

- Sign-up anytime
- Continuous - CCRP
- Batch Process – similar to CRP Grasslands
- Next batching date - to be determined



Migratory Bird SAFE

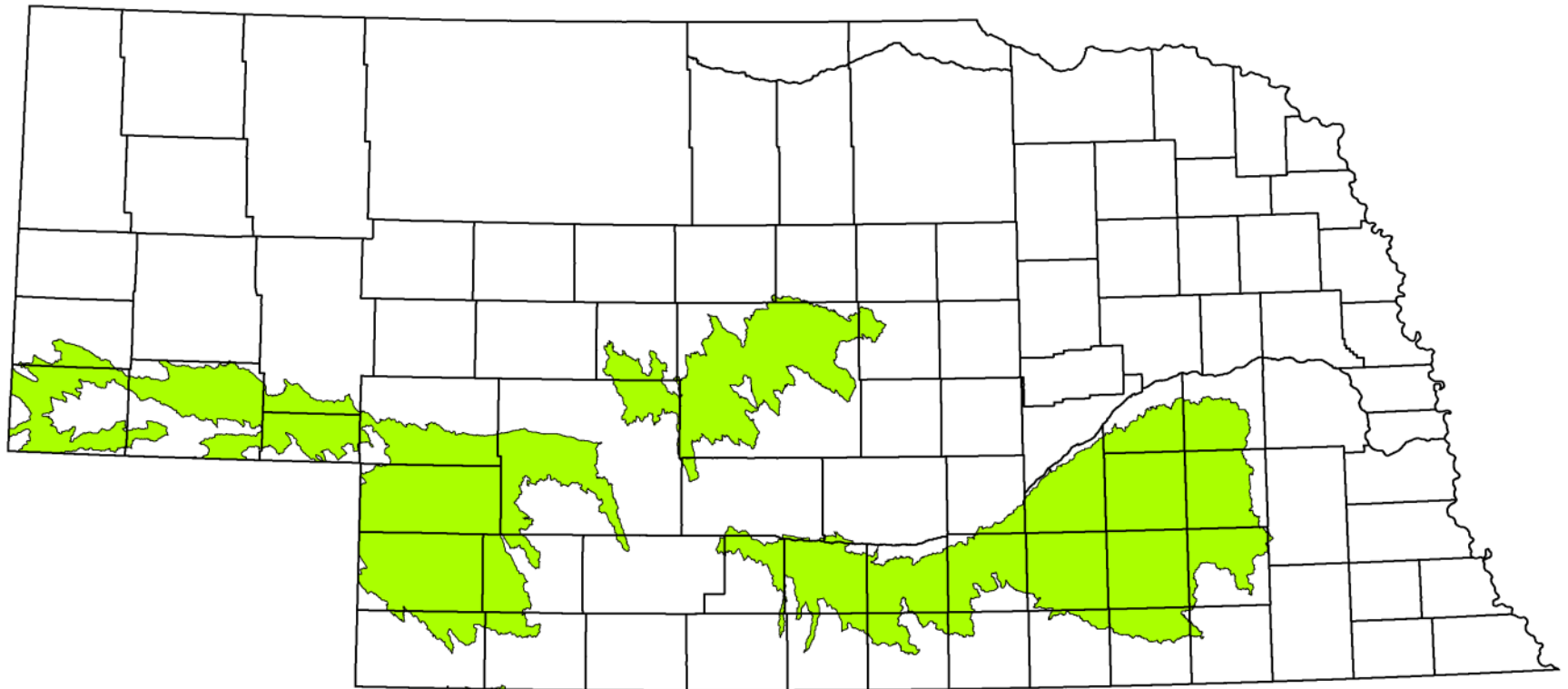
Signup Process

- Once approved, site visits by NRCS
- Offers not approved will be held for next batch
- Unsuccessful offers can be modified and resubmitted to improve competitiveness in next batch





Migratory Bird State Acres For wildlife Enhancement (SAFE) Eligible Areas of Nebraska



Eligible Wetland Areas

 High Playa Wetland Density HUCs



0 35 70 105 140
Miles



Produced by the Rainwater Basin
Joint Venture, Grand Island, NE

Migratory Bird SAFE

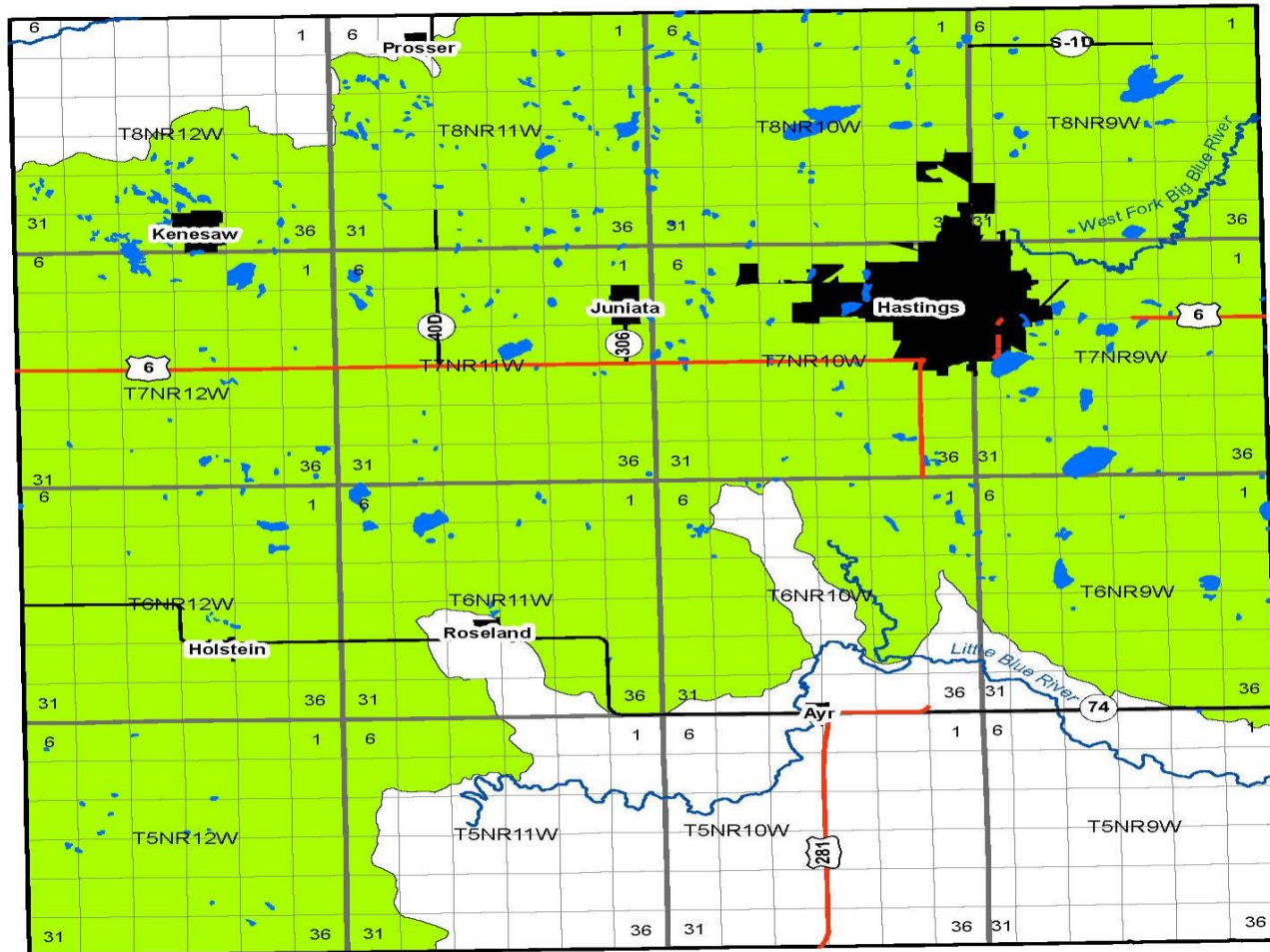
Eligible in parts of the following 42 counties:

Adams	Banner	Blaine	Buffalo
Butler	Chase	Cheyenne	Clay
Custer	Dawson	Deuel	Dundy
Fillmore	Franklin	Frontier	Furnas
Garden	Gosper	Hall	Hamilton
Harlan	Hayes	Hitchcock	Jefferson
Kearney	Keith	Kimball	Lancaster
Lincoln	Logan	Loup	Morrill
Nuckolls	Perkins	Phelps	Polk
Saline	Seward	Thayer	Valley
Webster	York		



Migratory Bird State Acres For wildlife Enhancement (SAFE) Eligible Areas

Adams County
Nebraska



Eligible Wetland Areas

- Playa Wetlands
- High Playa Wetland Density HUCs



0 2.5 5 7.5 10 Miles



Produced by the Rainwater Basin
Joint Venture, Grand Island, NE

Migratory Bird SAFE

Program Details

- **IMPORTANT:** To be eligible, playa hydrology must be restored to the full extent possible as determined by NRCS
- Remove sedimentation
- Fill concentrated pits
- Remove fill within hydric soil imprint
- 90% cost-share available (50% cost-share and 40% Practice Incentive Payment)

Migratory Bird SAFE

Program Details

- Eligible Land:
 - Cropland meeting 2-CRP par. 151 – Land must be planted 4 out of 6 years from 2008 through 2013
 - Located “ENTIRELY” in project area
 - Located outside 100-year floodplain
 - Is a playa lake
- Marginal pastureland is not eligible

Migratory Bird SAFE

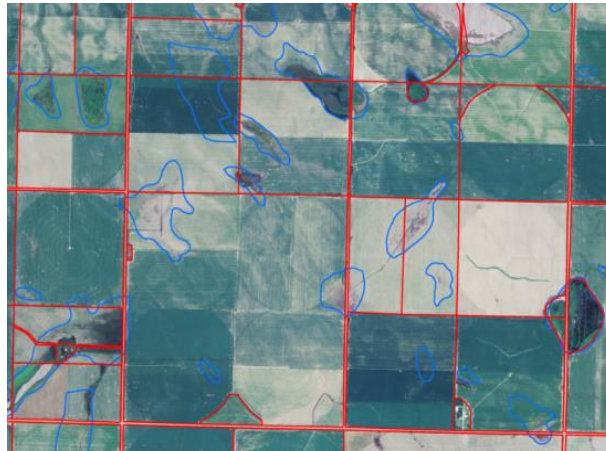
Program Details

- Contract Duration & Effective Date:
 - 10 to 15 year contracts
 - For Signup 50 all offers will have an effective date of 10/01/2017
- Signup 51 started on October 1, 2017 for very few CRP initiatives.
- Migratory Bird SAFE signup resumed on December 4, 2017.

Migratory Bird SAFE

Program Details

- Eligible size:
 - Maximum enrollment per offer (tract) is 160 acres
 - Minimum offer is 2 acres for entire offer
 - No wetland determination required or needed



Migratory Bird SAFE

Program Details

- Amount of adjacent upland acreage (buffer) to be enrolled shall be determined by the landowner and NRCS
- Amount of adjacent upland acres:
 - Limited to acres required to provide a protective buffer to the cropped wetland
 - Minimum average buffer is 120 feet
 - May be less than 4 to 1 ratio
 - Shall not exceed 4 to 1 ratio

Migratory Bird SAFE

Program Details

- Incentives:
 - Practice Incentive Payments (PIP) authorized on new land
 - Signing Incentive Payment (SIP) is **NOT** included in this SAFE. Landowners determine annual compensation.



Migratory Bird SAFE

Program Details

- Reverse Auction: (New Concept)
 - Annual rental amount determined by landowner
 - Limited to \$300 per acre
 - Offers compete for enrollment based on desired annual rental payment
 - Competitive ranking based on offer bid amounts



Migratory Bird SAFE

Program Details

- Reverse Auction: (Continued)
 - Landowner has control to offer based upon their determined value
 - Offers compete based on lowest rental rate offers received
 - Lowest rates will receive highest ranking

Migratory Bird SAFE

Program Details

- Reverse Auction Selection Process
 - Selection is competitive
 - Lower bids than other offers in area given more weight
 - Lower bids more likely to be accepted
 - Kansas & Nebraska compete separately
 - Limited to 10,000 acres per State

Migratory Bird SAFE

Program Details

- Reverse Auction Selection Process (Continued)
 - To ensure offer competitiveness
 - No more than 75% of offers submitted in each State will be accepted in any batching period
 - FSA will accumulate offers at end of batching period to rank



Migratory Bird SAFE

Program First Ranking Results

- First Ranking Deadline – March 31, 2017
- Deputy Administrator Offer Selection Criteria:
 - \$200 per acres or less
 - Offered amount/dryland soil rental rate ratio was 5 or less
- Nebraska had 18 offers for 947 acres, and seven of those offers for 196.46 acres were accepted

Migratory Bird SAFE

Program Details

- Deadline for next ranking period is unknown at present
- FSA can accept signup at any time
- Future selection criteria unknown at present



Migratory Bird SAFE

Program Outreach

- Nebraska Landowner Informational meetings – 7 meetings in Nebraska – August 2017
- FSA/RWBJV/PF Mailings
- FSA Newsletters
- RWBJV Informational Meeting - Today

Migratory Bird SAFE

Playa Restoration

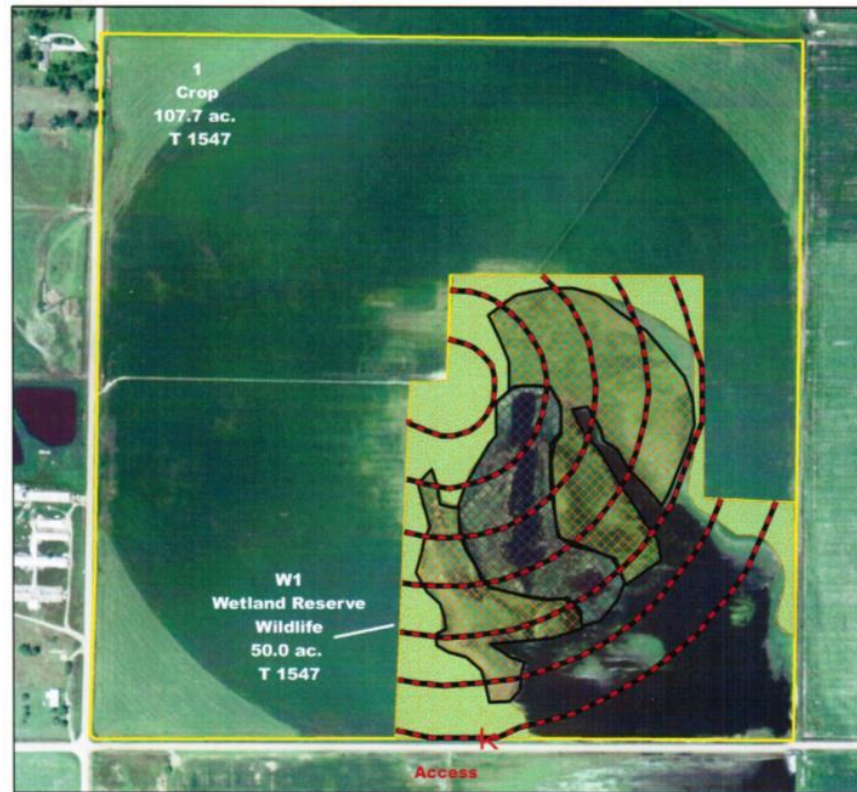
- Survey
- Planning
- Equipment



Migratory Bird SAFE

Playa Restoration (Continued)

- Survey
- Planning
- Equipment



Legend

- Access Regress
- pivot tracks **Leave 5 feet wide tracks @ existing conditions with no excavation**
- sediment removal deeper **6.3 acres @ 12 to 24 inches = 15,000 CY**
- sediment removal shallow **14.5 acres @ 3 to 6 inches = 8200 CY**
- Upland seeding **12.4 acres seed, seeding, site prep., weed control**
- wrp2011_t1547

225 0 225 450 675 900 Feet

Migratory Bird SAFE

Playa Restoration (Continued)

- Survey
- Planning
- Equipment



Migratory Bird SAFE

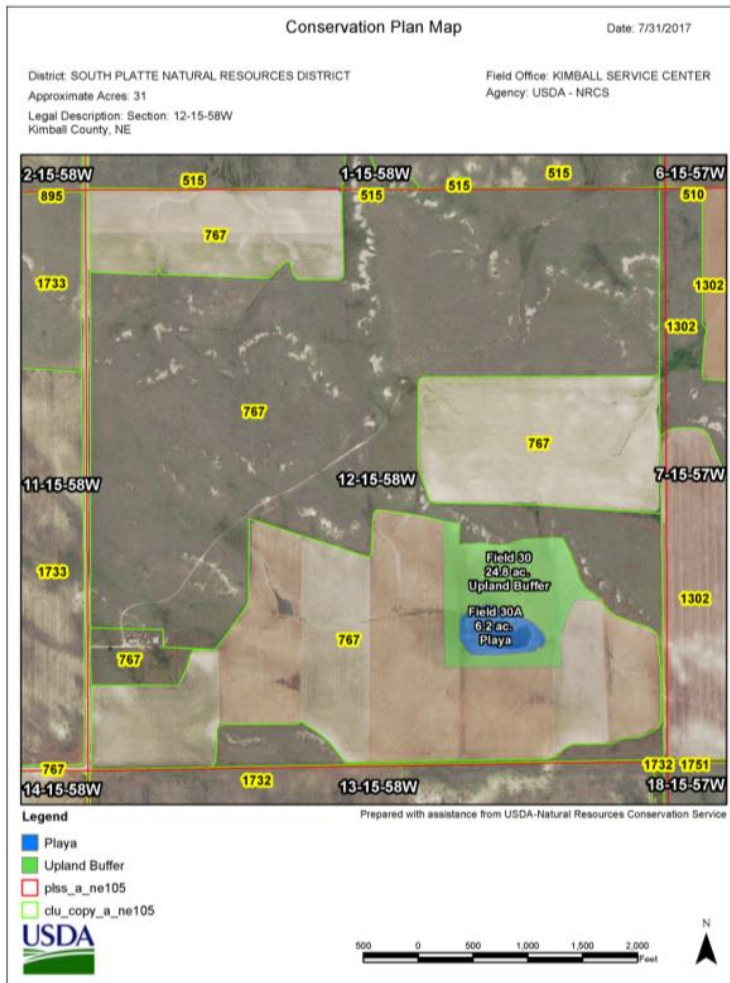
Project Examples

- Maximum Enrollment
- Minimum Buffer
- Square Fields
- Eligible Acres



Migratory Bird SAFE

Maximum Enrollment



CCRP CP38B-23A PAYMENT CALCULATIONS for Kimball COUNTY Page 1 of 2

Producer: Johnny B Farmin Farm # 5150 Date: 8/1/2017 Revised 03.22.2016
Phone # Legal Des Tract # 1 Field #s: 30,30a

Payment Rate Calculations - Paid annually in October

Primary	Map Unit	Acres	Soil Rental Rate	Total Annual Rent/Acre
NONE	24.8	\$195.00	=	\$4,836.00
Secondary	6.2	\$195.00	=	\$1,209.00
Tertiary	NONE		=	\$0.00
Totals	31.0		=	\$6,045.00

Weighted Average Soil Rental Rate: \$6,045.00 / 31.0 = \$195.00

Incentive Payment: \$195.00 x 20% = \$39.00

Maintenance Rate: \$0.00

Maximum Payment Rate/Acre: \$195.00

Payment Rate/Acre: \$195.00 x 31 = \$6,045.00

Total Acres in Tract: 31

Total Per Year: \$6,045.00

years in contract: 15

Total Contract: \$90,675.00

Eligible CCRP Practices -- NA
Maintenance Rate NA
20% Rental Rate Bonus? NA
CRP-SIP (Signing Incentive Payment) - One time payment issued after contract is approved.

Payment Calculations: 31 Acres Enrolled x 0 = \$0.00

Practice	Acres	Average Cost	Total Cost
340-Cover Crop w/ Site Prep	24.8	\$59.57	\$1,477.34
multi-species or single	24.8	\$129.33	\$3,207.38
327-Conservation Cover	24.8	\$20.28	\$502.94
(High Quality pollinator mix)	24.8	\$21.46	\$532.21
327-Planting	24.8	\$2.40	\$59.52
(no-tilt grassland drill)	24.8	\$2.40	\$59.52
327 Site Prep (Chemicals)	24.8	\$2.40	\$59.52
667 Wetland Restoration	4,722.0	\$2.40	\$11,332.80
Sediment Removal normal cont. est. cu yards		\$0.00	\$0.00

Payment Calculations

Total Practice Installation Costs: \$17,052.67

90% = \$15,347.40

Total Project Cost: \$17,052.67

Estimated Producer Cost (-) or Gain (+): -\$1,705.27

ESTIMATED COST SUMMARY (does not include the annual contract rate)

CRP - SIP: \$0.00

Total Project Cost: \$17,052.67

Estimated Producer Cost (-) or Gain (+): -\$1,705.27

This is only a rough estimate based on averages for cost of work that has been done in the area within the past year. It does not replace the need for landowners to obtain actual bids from the contractors they are considering hiring. It is recommended to meet and seek bids from at least 2-3 different sources. This is a tool intended to aid in the decision making process in selecting the appropriate conservation alternatives.

Migratory Bird SAFE

Minimum Buffer



CCRP CP38B-23A PAYMENT CALCULATIONS for Kimball COUNTY Page 1 of 2

Producer Johnny B Farmin Farm # 5150 Date 8/1/2017 Revised 03.22.2016
Phone # _____ Tract # 1 Field #s 30,30a
Legal Des. _____

Payment Rate Calculations - Paid annually in October

Soil Map Unit	Acres	Soil Rental Rate	Total Annual Rent/Acre
Primary NONE	6.7	\$195.00	\$1,308.50
Secondary NONE	6.2	\$195.00	\$1,209.00
Tertiary NONE			\$0.00
Totals	12.9		\$2,515.50

Weighted Average Soil Rental Rate $\frac{\$2,515.50}{12.9} = \195.00

Incentive Payment $\frac{\$195.00}{\text{Weighted Payment}} \times \begin{matrix} \text{20\%} \\ \text{0\%} \end{matrix} = + \0.00

Maintenance Rate $+ \$0.00$

Maximum Payment Rate/Acre $= \$195.00$

Payment Rate/Acre $\times \frac{12.9}{\text{Total Acres in Tract}} = \frac{\$2,515.50}{\text{Total Per Year}} \times \frac{15}{\text{years in contract}} = \$37,732.50$ Total Contract

Eligible CCRP Practices -- NA
Maintenance Rate NA
20% Rental Rate Bonus? NA
CRP-SIP (Signing Incentive Payment) - One time payment issued after contract is approved.

Payment Calculations $\frac{12.9}{\text{Acres Enrolled}} \times 0 = \0.00

CRP-PIP (Practice Incentive Payment)	Practice Costs	Total Cost
340-Cover Crop w/ Site Prep multi-species or single	\$59.57	\$768.45
327-Conservation Cover (High Quality pollinator mix)	\$129.33	\$1,668.36
327-Planting (no-ill grassland drill)	\$20.28	\$261.61
327 Site prep (Chemicals)	\$21.46	\$276.83
657 Wetland Restoration	\$2.40	\$11,332.80
Sediment Removal normal cond. est. cu yards		\$0.00
Average Cost per acre =	\$1,109.15	

Payment Calculations

$\frac{\$14,308.06}{\text{Total Practice}} \times 90\% = \frac{\$12,877.25}{\text{Total Cost Share}}$

Installation Costs $\frac{\$14,308.06}{\text{Total Practice Cost}}$

ESTIMATED COST SUMMARY (does not include the annual contract rate)

$\frac{\$0.00}{\text{CRP-SIP}} + \frac{\$12,877.25}{\text{Total Cost Share}} - \frac{\$14,308.06}{\text{Total Project Cost}} = -\$1,430.81$

Estimated Producer Cost (-) or Gain (+)

This is only a rough estimate based on averages for cost of work that has been done in the area within the past year. It does not replace the need for landowners to obtain actual bids from the contractors they are considering hiring. It is recommended to meet and seek bids from at least 2-3 different sources. This is a tool intended to aid in the decision making process in selecting the appropriate conservation alternatives.

Migratory Bird SAFE

Additional Partner Programs

- Ducks Unlimited
- Nebraska Game and Parks Commission
- Pheasants Forever
- Rainwater Basin Joint Venture
- U.S. Fish and Wildlife Service
- NRCS Wetland Programs



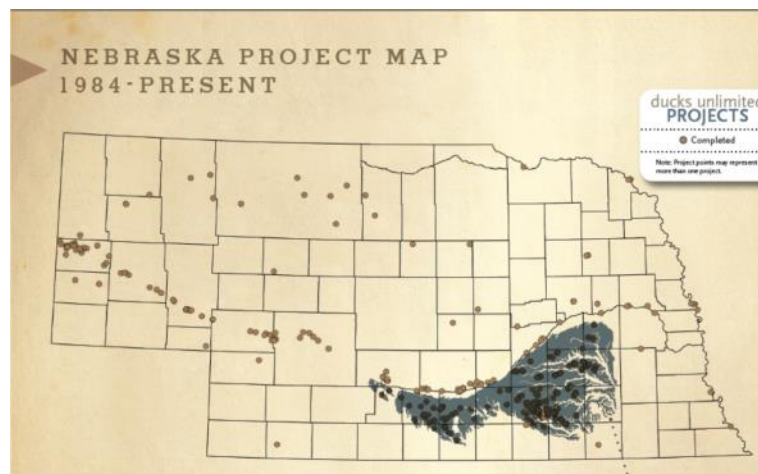
Migratory Bird SAFE

Ducks Unlimited is the world's leader in wetlands and waterfowl conservation.

Mission: *Habitat Conservation*

Vision: *Filling the skies with waterfowl today, tomorrow and Forever*

John C. Denton
Nebraska Manager of Conservation Programs
2121 N. Webb Road, Suite 309
Grand Island, NE 68803
(308) 258-4682 – jdenton@ducks.org



Migratory Bird SAFE

Pit Fills



Grazing Infrastructure



Pumps and Pipelines



Enhancement & Maintenance



Migratory Bird SAFE



**OPEN FIELDS
AND WATERS**

More places to hunt and fish.

THE BERGGREN PLAN
NEBRASKA'S MEGA PLAN
IMPROVING PHEASANT HUNTING
"We're all in!"



Migratory Bird SAFE

Working Lands – Grazing

- Add-on to any other program
- Grazing infrastructure
 - 85% cost-share for grazing infrastructure
 - Fence, livestock well, and/or livestock tanks
 - Minimum site size = ~40 acres



Migratory Bird SAFE

Working Lands – Pivots

- Pivot modifications
 - 85% cost-share for pivot modifications
 - Tire modifications
 - Move pivot point
 - Corner systems
- Minimum site size = ~40 acres



Migratory Bird SAFE

Portable Corral System

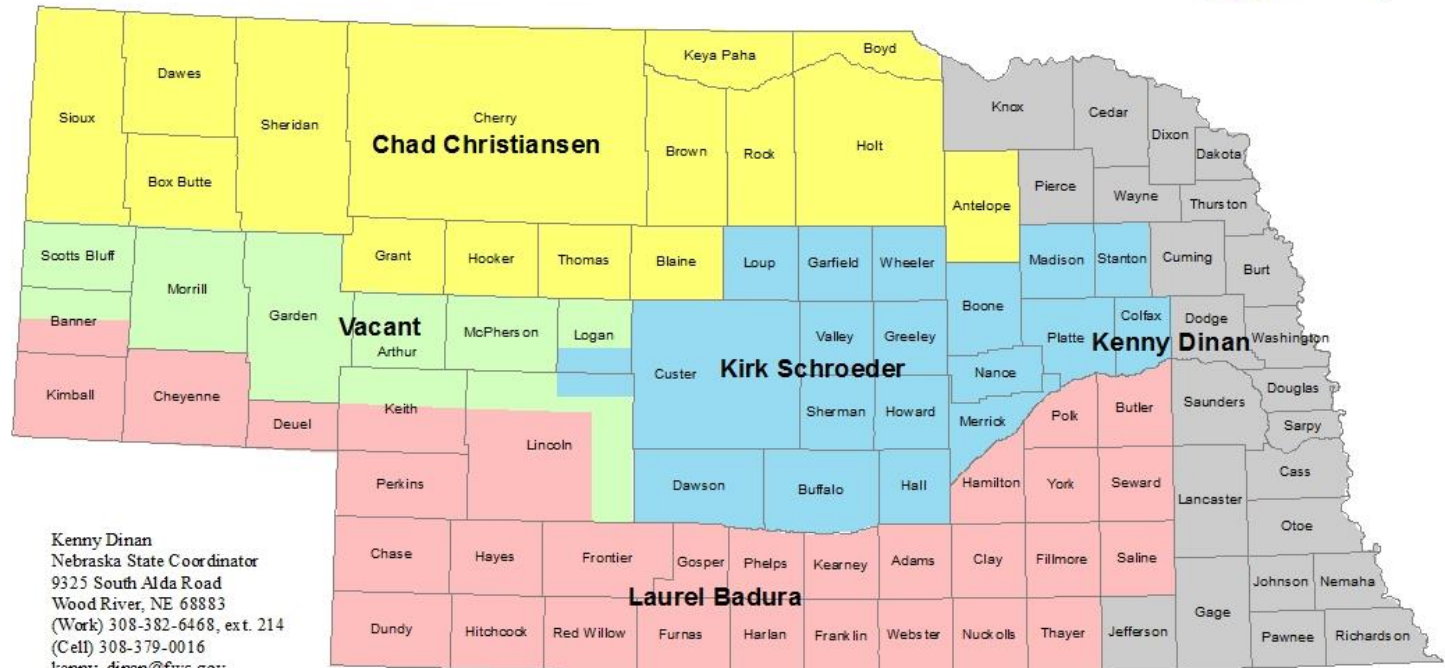
- Available to anyone in a program
- Managed through Little Blue NRD
- No cost lease



Migratory Bird SAFE



Nebraska Partners for Fish and Wildlife Program Migratory Bird State Acre for Wildlife USFWS Contacts



Kenny Dinan
Nebraska State Coordinator
9325 South Alda Road
Wood River, NE 68883
(Work) 308-382-6468, ext. 214
(Cell) 308-379-0016
kenny_dinan@fws.gov

Kirk Schroeder
Assistant State Coordinator
9325 South Alda Road
Wood River, NE 68883
Office - (308) 382-6468, ext. 215
Cell - (308) 379-8556
E-mail: kirk_d_schroeder@fws.gov

Chad Christiansen
Sandhills Private Lands Biologist
Fort Niobrara/Valentine NWR Complex
39983 Refuge Road, Box 67
Valentine, NE 69201
Tel: (402) 376-3789, ext. 223
Cell: (402) 322-0805
E-mail: chad_christiansen@fws.gov

Laurel Badura
Rainwater Basin Private Lands Biologist
Rainwater Basin WMD
P.O. Box 8
Furk, NE 68940
Tel: (308) 263-3000, ext. 107
Cell: (308) 440-1388
E-mail: laurel_badura@fws.gov

Vacant
Western Nebraska Private Lands Biologist
Please contact Kenny Dinan
9325 South Alda Road
Wood River, NE 68883
Office - (308) 382-6468, ext. 214
Cell - (308) 379-0016
kenny_dinan@fws.gov

Migratory Bird SAFE

USFWS PFW

- Work cooperatively with both landowners and other partners throughout Nebraska to restore and maintain habitat for Federal Trust species
- Conserve biological diversity through the careful selection, design and implementation of restoration projects
- Provide technical and financial assistance to landowners and our partners involved in the implementation of key conservation programs

