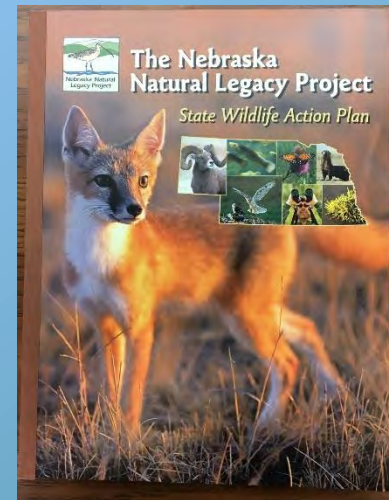


Nebraska Natural Legacy Project Updates



Rick Schneider
Nebraska Natural Heritage Program
Nebraska Game and Parks Commission



State Wildlife Action Plan

Mission: to develop and implement a blueprint for conserving Nebraska's flora, fauna and natural habitats through the proactive, voluntary conservation actions of partners, communities and individuals.

Recovering America's Wildlife Act

- Bipartisan legislation to fund conservation of full array of wildlife through implementation of the Nebraska Natural Legacy Project
- Proactive, voluntary, incentive-based conservation on public and private lands
- Focused on recovering at-risk species and keeping common species common



Our Nature. Our Nation. Our Future.



Recovering America's Wildlife Act

- Includes funding for wildlife conservation education and wildlife-associated recreation
- \$1.3 billion annually from outer continental shelf oil revenue and mining revenue of federal lands
- Nebraska's estimated portion is \$18 million (requires 25% match)



Our Nature. Our Nation. Our Future.



The Far Side by Gary Larson



“If we pull this off, we’ll eat like kings.”

Recovering America's Wildlife Act

- Natural Legacy conservation partners include:
Audubon Nebraska, Ducks Unlimited, National Wild Turkey Federation, Pheasants and Quail Forever,
The Nature Conservancy
- The Alliance for America's Fish and Wildlife is the national campaign to build support for RAWA

OurNatureUSA.com



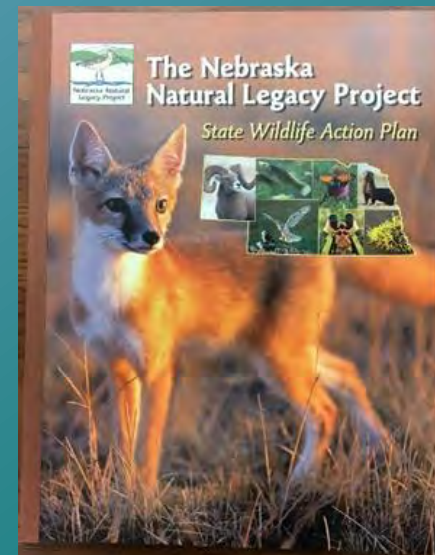
State Wildlife Action Plan Revision: Species of Greatest Conservation Need

Tier 1 Species

Globally or nationally at risk of extinction

Tier 2 Species

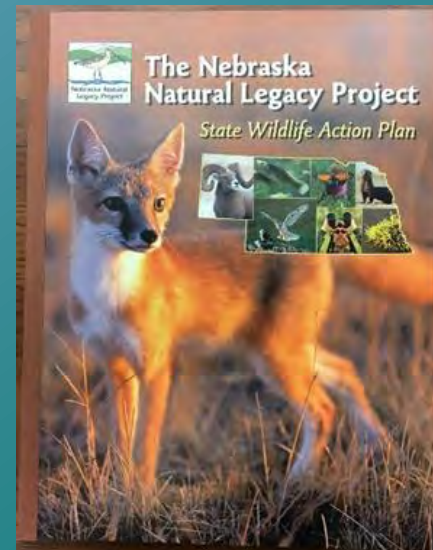
At risk of extirpation from Nebraska



State Wildlife Action Plan Revision: Species of Greatest Conservation Need

Process

- NGPC staff developed initial recommendations
- Experts workshops: Birds, Fishes, Insects, Mammals, Reptiles/Amphibians, Plants
- Review by Natural Legacy Partnership Team
- Approval by USFWS



Summary of Changes

Tier 1 Species

37 added, 19 from Tier 2
7 removed, 2 to Tier 2



Tier 2 Species

35 added, 2 from Tier 1
98 removed, 19 to Tier 1



Overall

51 species new to lists
84 species dropped from lists

**Revision of the Tier 1 and 2 Lists of
Species of Greatest Conservation Need**



A Supplement to the
Nebraska Natural Legacy Project
State Wildlife Action Plan

2018

NebraskaNaturalLegacy.org

Conservation and Environmental Review Tool

The screenshot displays the web interface of the Nebraska Conservation and Environmental Review Tool. The header features the "NEBRASKA" logo with "GAME" and "PARKS" subtext, followed by the title "Conservation and Environmental Review Tool". Navigation links include "Home", "Map", "My Projects", "My Subscription", "Terms & Conditions", "Help", and "Resources". A search bar at the top right contains "Find address or place". The left sidebar lists "Layers" with categories: "Special Areas" (Critical Habitat, Scenic and Recreational Rivers (NPS)), "Species and Habitat" (Township-level Species and Communities, Tier 1 at-risk species - Ranges/Models, Crucial Habitat Assessment Tool (CHAT), Large Intact Blocks of Habitat, Biologically Unique Landscapes), and "Reference Layers" (NGPC Properties, Protected Areas Database (USGS), River Sub-basins (HUC 8), Sub-watersheds (HUC12), River Basins). The main map area shows Nebraska with major cities (Cheyenne, North Platte, Grand Island, Kearney, Hastings, Lincoln, Omaha, Norfolk, Sioux City) and the Missouri River. A scale bar indicates 100km and 60mi, with a scale of 1:4,622,324. Coordinates are Latitude: 39.6900, Longitude: -103.3573. A disclaimer at the bottom right states: "Content may not reflect National Geographic's current map policy. Sources: ...".

cert.outdoornebraska.gov



Conservation and Environmental Review Tool

[My account](#) [Log out](#)

[Home](#) [Map](#) [My Projects](#) [My Subscription](#) [Terms & Conditions](#) [Help](#) [Resources](#)

[Switch Basemap](#) [Add Resources](#) [Create Project](#)

[Find address or place](#)

Layers **Make a Map** **Feature Search**

Special Areas

- ☐ Critical Habitat
- ☐ Scenic and Recreational Rivers (NPS)

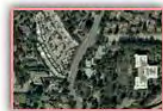
Species and Habitat

- ☐ Township-level Species and Communities
- ☐ Tier 1 at-risk species - Ranges/Models
- ☐ Crucial Habitat Assessment Tool (CHAT)
- ☐ Large Intact Blocks of Habitat
- ☐ Biologically Unique Landscapes

Reference Layers

- ☐ NGPC Properties
- ☐ Protected Areas Database (USGS)
- ☐ River Sub-basins (HUC 8)
- ☐ Sub-watersheds (HUC12)
- ☐ River Basins

Switch Basemap



Imagery



Imagery with Labels



Streets



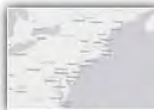
Topographic



Terrain with Labels



Dark Gray Canvas



Light Gray Canvas



National Geographic



USA Topo Maps



USGS National Map



Oceans

Latitude: 42.0534, Longitude: -100.0546

Earthstar Geographics



Conservation and Environmental Review Tool

[My account](#)[Log out](#)[Home](#)[Map](#)[My Projects](#)[My Subscription](#)[Terms & Conditions](#)[Help](#)[Resources](#)[Switch Basemap](#) [Add Resources](#) [Create Project](#)[Find address or place](#)[Layers](#) [Make a Map](#) [Feature Search](#)

▼ Special Areas

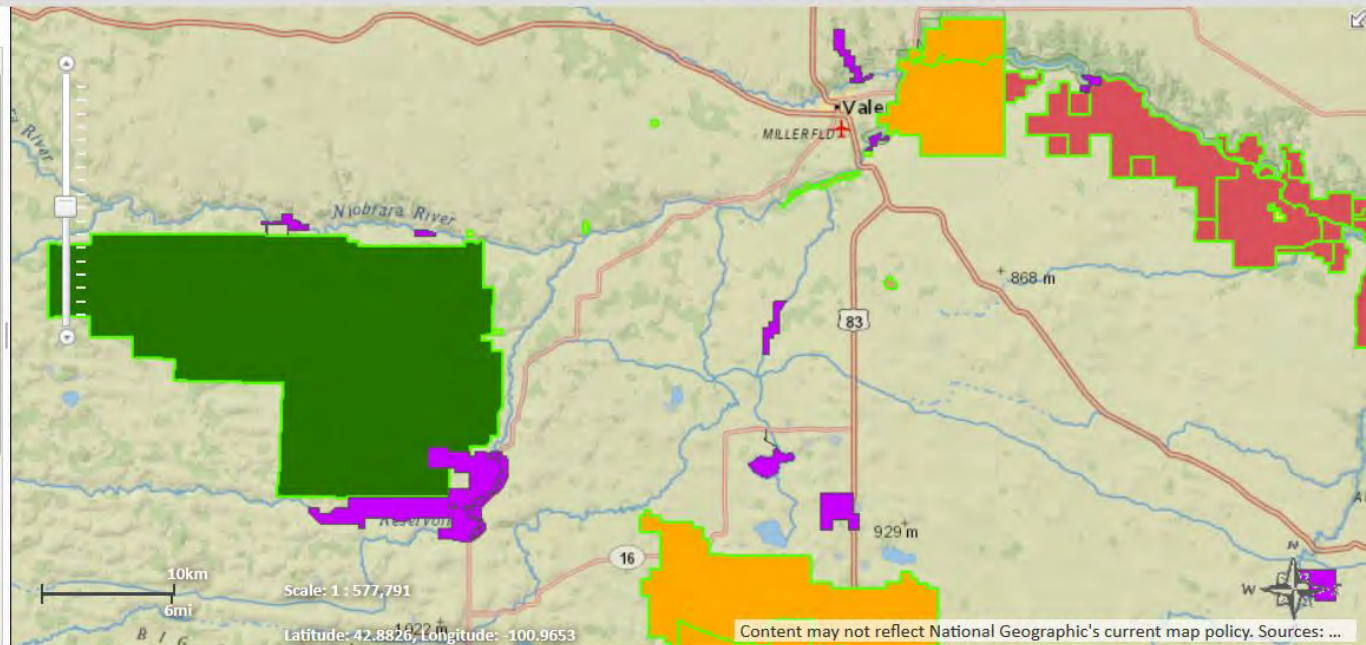
- ☐ Critical Habitat
- ☐ Scenic and Recreational Rivers (NPS)

▼ Species and Habitat

- ☐ Township-level Species and Communities
- ☐ Tier 1 at-risk species - Ranges/Models
- ☐ Crucial Habitat Assessment Tool (CHAT)
- ☐ Large Intact Blocks of Habitat
- ☐ Biologically Unique Landscapes

▼ Reference Layers

- ☒ NGPC Properties
- ☒ Protected Areas Database (USGS)
- ☐ River Sub-basins (HUC 8)
- ☐ Sub-watersheds (HUC12)
- ☐ River Basins





Conservation and Environmental Review Tool

[My account](#) [Log out](#)

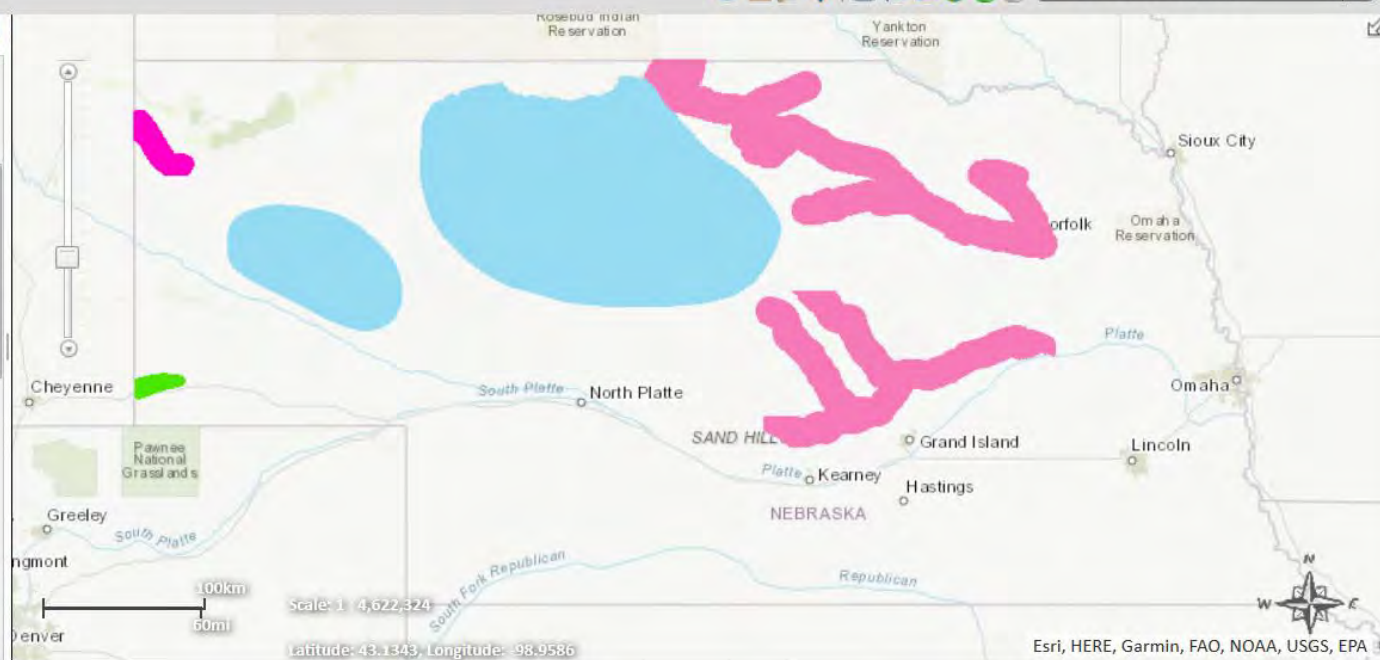
[Home](#) [Map](#) [My Projects](#) [My Subscription](#) [Terms & Conditions](#) [Help](#) [Resources](#)

[Switch Basemap](#) [Add Resources](#) [Create Project](#)

[Find address or place](#)

Layers **Make a Map** **Feature Search**

- ☐ Township-level Species and Communities
- ☒ Tier 1 at-risk species - Ranges/Models
 - ☒ All Taxa
 - ☒ Plants
 - ☒ Listed Plants
 - ☐ American Ginseng
 - ☒ Blowout Penstemon
 - ☒ Colorado Butterfly Plant
 - ☐ Saltwort
 - ☒ Small White Lady's Slipper
 - ☒ Ute Ladies' Tresses
 - ☐ Western Prairie Fringed Orchid
 - ☒ Other Plants
 - ☒ Mussels
 - ☒ Fish
 - ☒ Reptiles and Amphibians
 - ☒ Insects and Crustaceans
 - ☒ Birds



Layers **Make a Map** **Feature Search**

▼ **Special Areas**

- ☐ Critical Habitat
- ☐ Scenic and Recreational Rivers (NPS)

▼ **Species and Habitat**

- ☐ Species and Communities
- ☐ Black-tailed Prairie Dog Colonies
- ☒ Township-level Species and Communities
- ☐ Tier 1 at-risk species - Ranges/Models
- ☐ Crucial Habitat Assessment Tool (CHAT)
- ☐ Large Intact Blocks of Habitat
- ☐ Biologically Unique Landscapes

▼ **Reference Layers**

- ☐ NGPC Properties
- ☐ Protected Areas Database (USGS)
- ☐ River Sub-basins (HUC 8)





Conservation and Environmental Review Tool

[My account](#)[Log out](#)[Home](#)[Map](#)[My Projects](#)[My Subscription](#)[Terms & Conditions](#)[Help](#)[Resources](#)[Switch Basemap](#) [Add Resources](#) [Create Project](#)[Layers](#) [Make a Map](#) [Feature Search](#)

▼ Special Areas

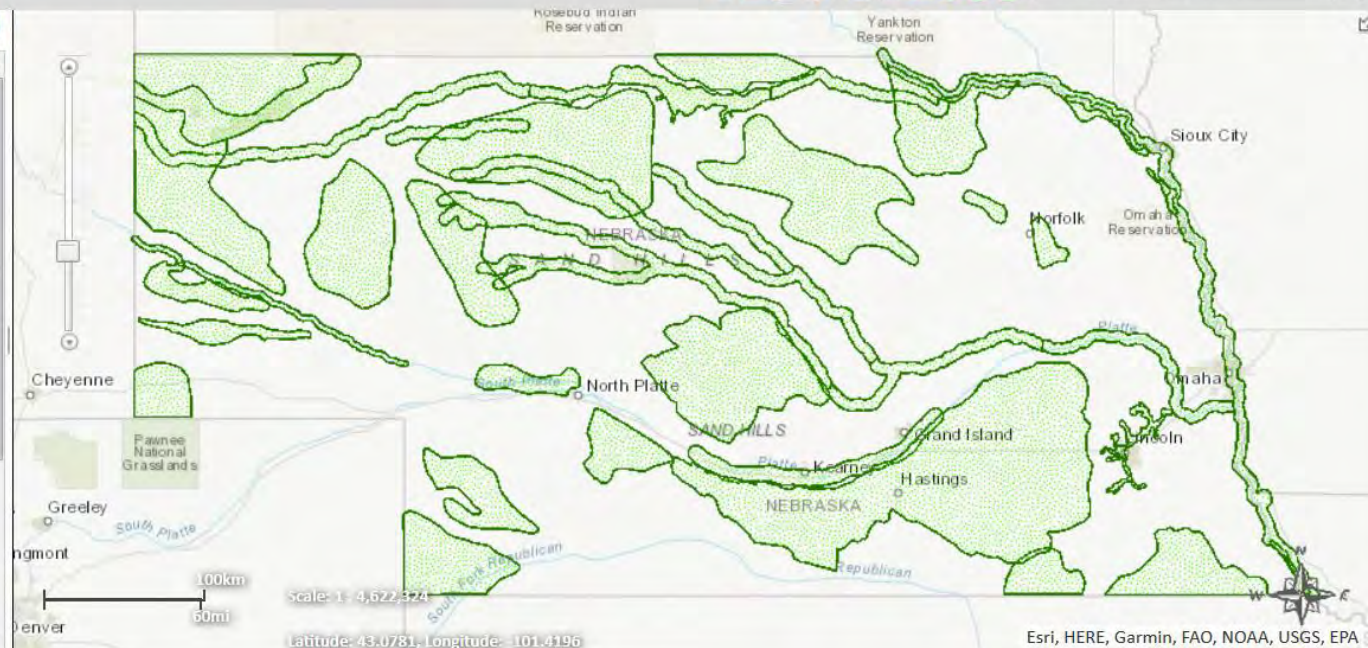
- ☐ Critical Habitat
- ☐ Scenic and Recreational Rivers (NPS)

▼ Species and Habitat

- ☐ Township-level Species and Communities
- ☐ Tier 1 at-risk species - Ranges/Models
- ☐ Crucial Habitat Assessment Tool (CHAT)
- ☐ Large Intact Blocks of Habitat
- ☒ Biologically Unique Landscapes

▼ Reference Layers

- ☐ NGPC Properties
- ☐ Protected Areas Database (USGS)
- ☐ River Sub-basins (HUC 8)
- ☐ Sub-watersheds (HUC12)
- ☐ River Basins





Conservation and Environmental Review Tool

[My account](#) [Log out](#)

[Home](#)

[Map](#)

[My Projects](#)

[My Subscription](#)

[Terms & Conditions](#)

[Help](#)

[Resources](#)

[Switch Basemap](#) [Add Resources](#) [Create Project](#)

[Find address or place](#)

Layers **Make a Map** **Feature Search**

Added Resources

☒ **Wetlands**

Special Areas

☐ **Critical Habitat**

☐ **Scenic and Recreational Rivers (NPS)**

Species and Habitat

☐ **Township-level Species and Communities**

☐ **Tier 1 at-risk species - Ranges/Models**

☐ **Crucial Habitat Assessment Tool (CHAT)**

☐ **Large Intact Blocks of Habitat**

☐ **Biologically Unique Landscapes**

Reference Layers

☐ **NGPC Properties**

☐ **Protected Areas Database (USGS)**

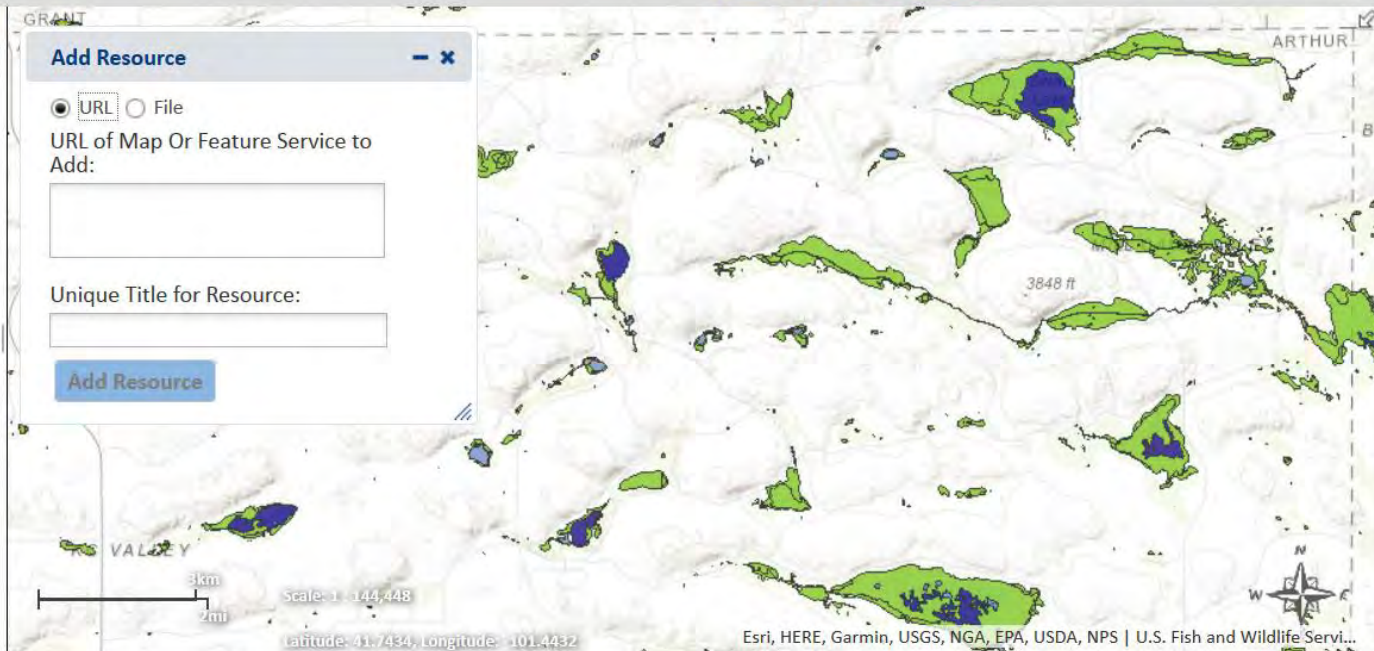
Add Resource

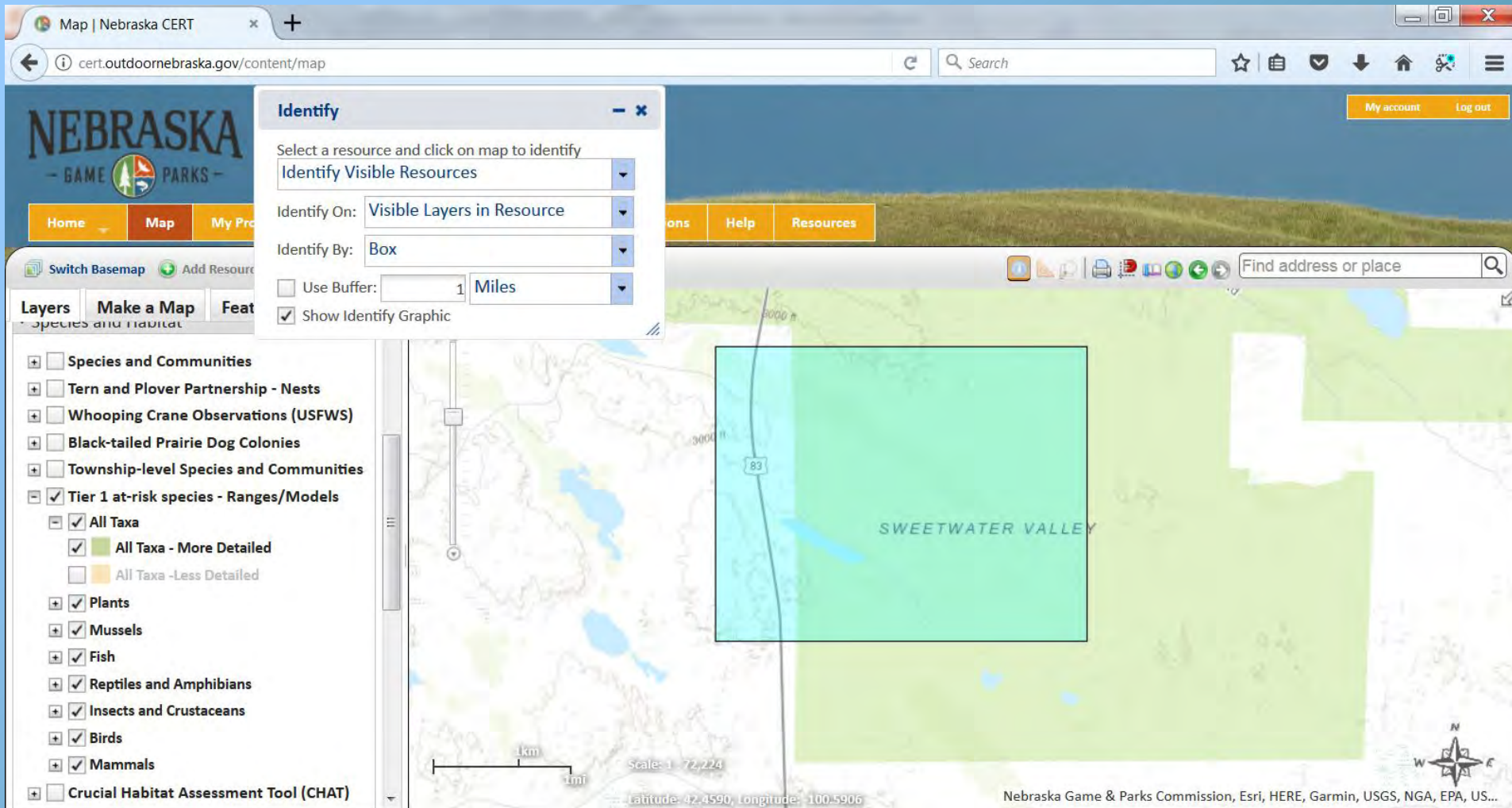
☒ URL ☐ File

URL of Map Or Feature Service to Add:

Unique Title for Resource:

[Add Resource](#)





Map | Nebraska CERT

cert.outdoornebraska.gov/content/map

Search

My accountLog out

HomeMapMy Projects

Switch BasemapAdd Resources

Identify

Select a resource and click on map to identify

Identify Visible Resources

Identify On: Visible Layers in Resource

Identify By: Box

Use Buffer: 1 Miles

onsHelpResources

Find address or place

Layer

Attribute Table: Tier 1 at-risk species - Ranges/Models/1 (23 features shown)

| | Common Name | Scientific Name | Element Code | Legacy Status | Federal Status | State Status | USFS Status | Season | Taxonomic Group | Data Type | ERT Code | Category | Strank | Grank | Informal Taxonomic Group |
|--------------------------|--------------------------------|------------------------|--------------|---------------|----------------|--------------|-------------|--------|-----------------|-----------|----------|---------------------|--------|-------|--------------------------|
| <input type="checkbox"/> | Whooping Crane | Grus americana | ABNMK01030 | Tier 1 | Endangered | Endangered | | M | Bird | Range | WHCR | Vertebrate Animal | S1 | G1 | Birds |
| <input type="checkbox"/> | American Burying Beetle | Nicrophorus americanus | IICOL42010 | Tier 1 | Endangered | Endangered | | Y | Insect | Range | ABB | Invertebrate Animal | S1 | G2G3 | Other Beetles |
| <input type="checkbox"/> | Western Prairie Fringed Orchid | Platanthera praecleara | PMORC1Y0S0 | Tier 1 | Threatened | Threatened | | Y | Plant | Range | WPFO | Vascular Plant | S2 | G3 | Flowering Plants |
| <input type="checkbox"/> | Blowout Penstemon | Penstemon haydenii | PDSCR1L300 | Tier 1 | Endangered | Endangered | | Y | Plant | Range | BOPE | Vascular Plant | S1 | G1G2 | Flowering Plants |

CloseZoomFlashPrint to PDFExport as CSV

Crucial Habitat Assessment Tool (CHAT)

Latitude: 42.4177, Longitude: 100.5398

Nebraska Game & Parks Commission, Esri, HERE, Garmin, USGS, NGA, EPA, US...

Layers **Make a Map** **Feature Search**

▼ **Special Areas**

- ☐ Critical Habitat
- ☐ Scenic and Recreational Rivers (NPS)

▼ **Species and Habitat**

- ☐ Species and Communities
- ☐ Black-tailed Prairie Dog Colonies
- ☒ Township-level Species and Communities
- ☐ Tier 1 at-risk species - Ranges/Models
- ☐ Crucial Habitat Assessment Tool (CHAT)
- ☐ Large Intact Blocks of Habitat
- ☐ Biologically Unique Landscapes

▼ **Reference Layers**

- ☐ NGPC Properties
- ☐ Protected Areas Database (USGS)
- ☐ River Sub-basins (HUC 8)



Map | Nebraska CERT

Sandhills Burn CP Report | Nebraska CERT

cert.outdoornebraska.gov/content/map

Search

☆

📁

🔍

⬇️

🏠

🔗

☰

NEBRASKA

— GAME PARS —

Home

Map

My Projects

My Subscri

Switch Basemap

Add Resources

Create Project

Layers

Make a Map

Feature Search

Drawing Type:

Polygons

Stop

▼ Annotation Settings

Fill Style: No Fill

Outline Style: Solid

Outline Color:

Outline Thickness: 4 px

▼ Annotation Layer Settings

Visibility: ☒

Transparency: 0 %

Clear All Annotations

Draw/Edit

🖋️

📄

📁

🔗

↶

↷

🗑️

🔍

⚙️

Draw Mode: Polygon

Cancel

Accept

Find address or place

🔍

0.6km

0.4mi

Valentine NWR

Scale: 1 : 36,112

Latitude: 42.5907, Longitude: -100.5936

2017 Burn Unit

Earthstar Geographics, CNES/Airbus DS



Conservation Planning Report

Project Information

| | |
|-----------------------------------|--|
| Report Generation Date: | 6/21/2017 10:12:33 AM |
| Project Title: | Ponderosa WMA report |
| User Project Number(s): | |
| System Project ID: | NE-CERT-000002 |
| Project Type: | Conservation Planning Report (not an environmental review) |
| Project Activities: | None Selected |
| Project Size: | 3,866.51 acres |
| County(s): | Dawes |
| Watershed(s): | White-Hat |
| Watershed(s) HUC 8: | Upper White |
| Watershed(s) HUC 12: | Ash Creek; Hooker Creek-White River; Squaw Creek |
| Biologically Unique Landscape(s): | Pine Ridge |
| Township/Range and/or Section(s): | 031N051W |
| Latitude/Longitude: | 42.640729 / -103.305037 |

Contact Information

| | |
|-------------------------|------------------------------------|
| Organization: | Nebraska Game and Parks Commission |
| Contact Name: | Rick Schneider |
| Contact Phone: | 402-471-5569 |
| Contact Email: | rick.schneider@nebraska.gov |
| Contact Address: | 2200 n. 33rd St. Lincoln NE 68503 |
| Prepared By: | |
| Submitted On Behalf Of: | |

Project Description

Conservation planning report for the Ponderosa WMA

Conservation and Environmental Review Tool

The screenshot displays the Nebraska Conservation and Environmental Review Tool web application. The header features the "NEBRASKA" logo with "GAME" and "PARKS" subtext, followed by the title "Conservation and Environmental Review Tool". Navigation links include "Home", "Map", "My Projects", "My Subscription", "Terms & Conditions", "Help", and "Resources". A "My account" and "Log out" link is in the top right. Below the navigation bar, there are buttons for "Switch Basemap", "Add Resources", and "Create Project". A search bar with the placeholder "Find address or place" is on the right. The left sidebar contains three main sections: "Layers", "Make a Map", and "Feature Search". Under "Layers", there are three expandable categories: "Special Areas" (with checkboxes for "Critical Habitat" and "Scenic and Recreational Rivers (NPS)"), "Species and Habitat" (with checkboxes for "Township-level Species and Communities", "Tier 1 at-risk species - Ranges/Models", "Crucial Habitat Assessment Tool (CHAT)", "Large Intact Blocks of Habitat", and "Biologically Unique Landscapes"), and "Reference Layers" (with checkboxes for "NGPC Properties", "Protected Areas Database (USGS)", "River Sub-basins (HUC 8)", "Sub-watersheds (HUC12)", and "River Basins"). The main map area shows a map of Nebraska with various geographical features, including the Missouri River, major cities like Cheyenne, North Platte, Grand Island, Kearney, Hastings, Lincoln, Omaha, and Sioux City, and the Sand Hills region. A scale bar indicates 100km and 60mi, with a scale of 1:4,622,324. The map also shows the "UNITED STATES" border and a compass rose. At the bottom, there is a disclaimer: "Content may not reflect National Geographic's current map policy. Sources: ...".

cert.outdoornebraska.gov

Questions / Comments?



