

Working Lands for Wildlife

A Leveraged Approach for Beef, Birds, & Beetles in Nebraska's Sandhills

Ryan Lodge
Working Lands Coordinator,
Pheasants Forever



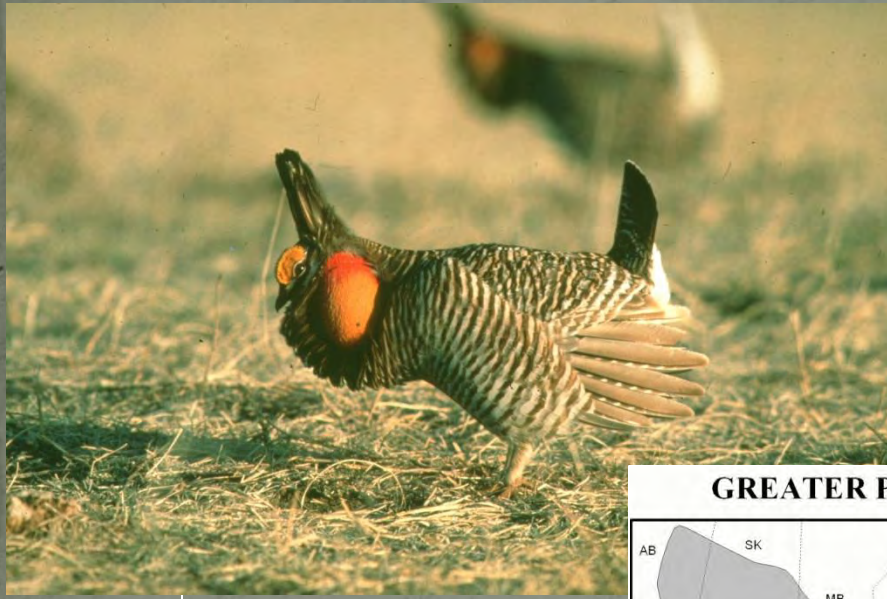
Sharp-tailed Grouse



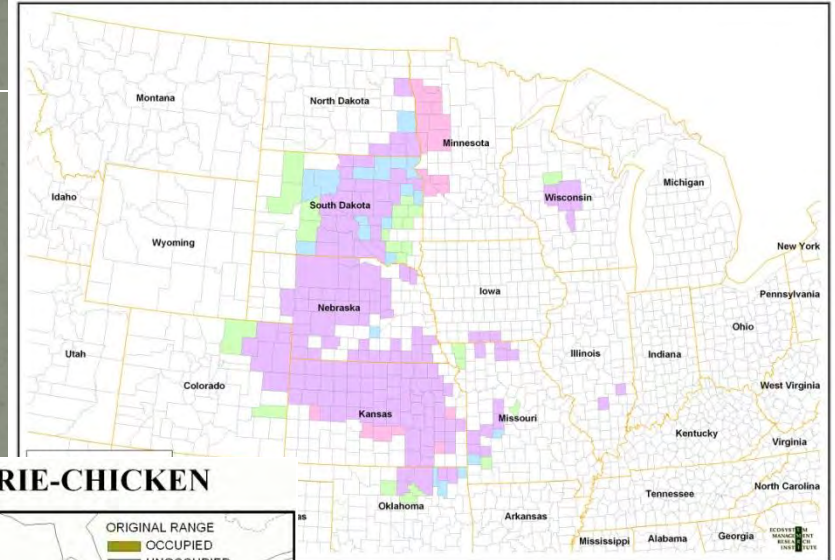
Greater Prairie- Chicken



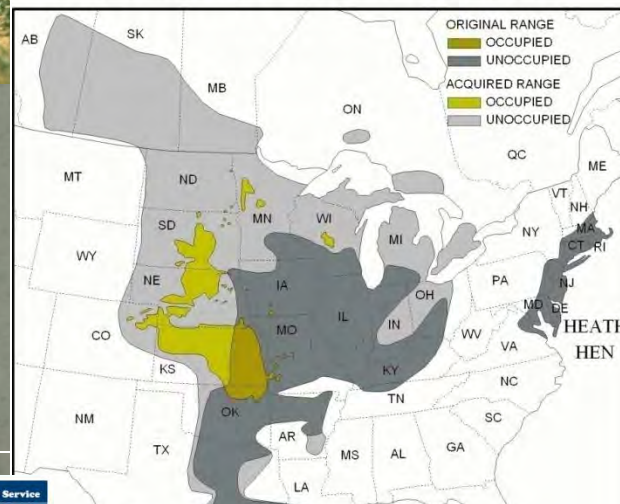
Greater Prairie-Chicken



Status Of Greater Prairie Chickens by County in the Continental United States



GREATER PRAIRIE-CHICKEN



Habitat

- **75% of life spent within 5 miles of where they were born**
- **Open expansive grasslands**
- **Less than 5% tree cover on the landscape**
- **Considered a resident species, large home ranges**



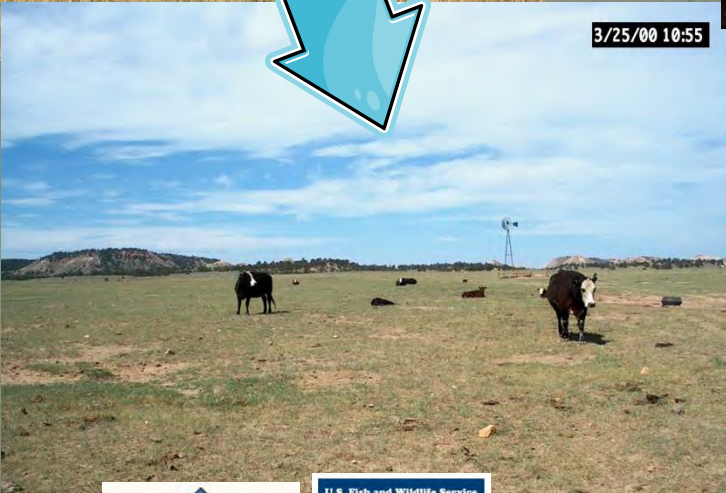
Habitat

- **>75% landscape in grassland**
- **<25% landscape in cropland**
- **Quality Nesting Cover**





Indirect Conversion



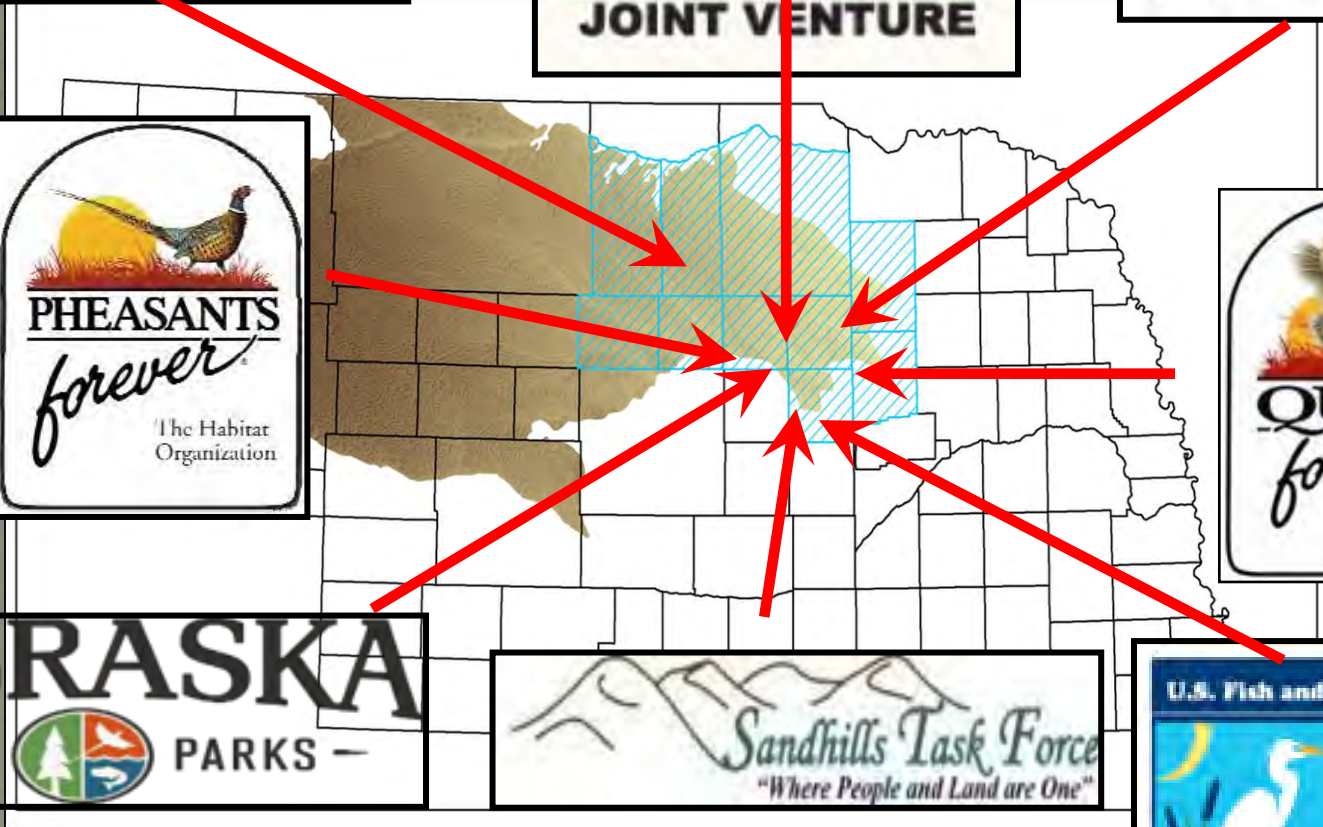
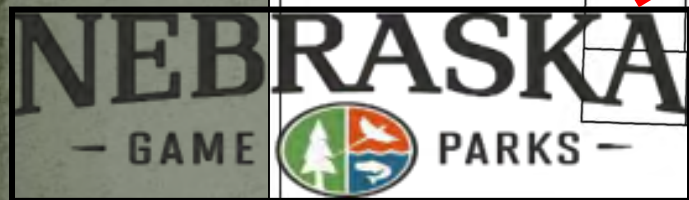
Invasive Species and Exotics



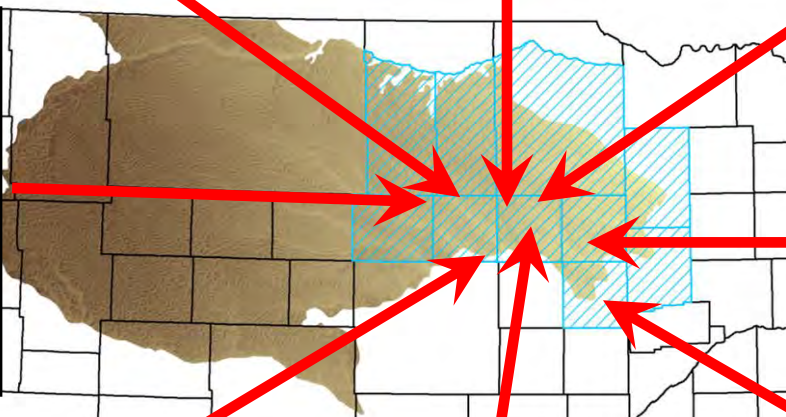
Working Lands for Wildlife

- **WLFW will target ranch projects in the Eastern Sandhills.**
- **Address resource concerns & restore habitats that will principally benefit greater prairie-chickens & American burying beetles.**
- **Ranch projects will entail mechanically removing ERC, modifying grazing infrastructure, adoption of new grazing regimes, and integrating prescribed fire.**
- **As a result of these projects the enrolled ranches will be economically viable, sustainable into future, and contain diverse native grasslands that will provide habitat for grassland nesting birds, such as greater prairie chickens, the American Burying Beetle, and other priority wildlife species.**









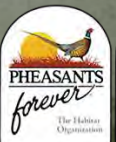
Desired Project Outcomes

- Expect to see prairie grouse expand back into these project areas
- See increased use of prescribed fire as a management tool to control ERC encroachment in the Sandhills
- Landowner support for managing Sandhill prairies for both grazing and wildlife











2017 Accomplishments

- **10 EQIP WLFW Projects**
- **13,486 ac.**
- **Projects include prescribed grazing systems, eastern red cedar removal and prescribed fire.**



2018 Accomplishments

- **8 EQIP WLFW Projects**
- **12,469 ac.**
- **Projects include prescribed grazing systems and eastern red cedar removal**



2019 Accomplishments

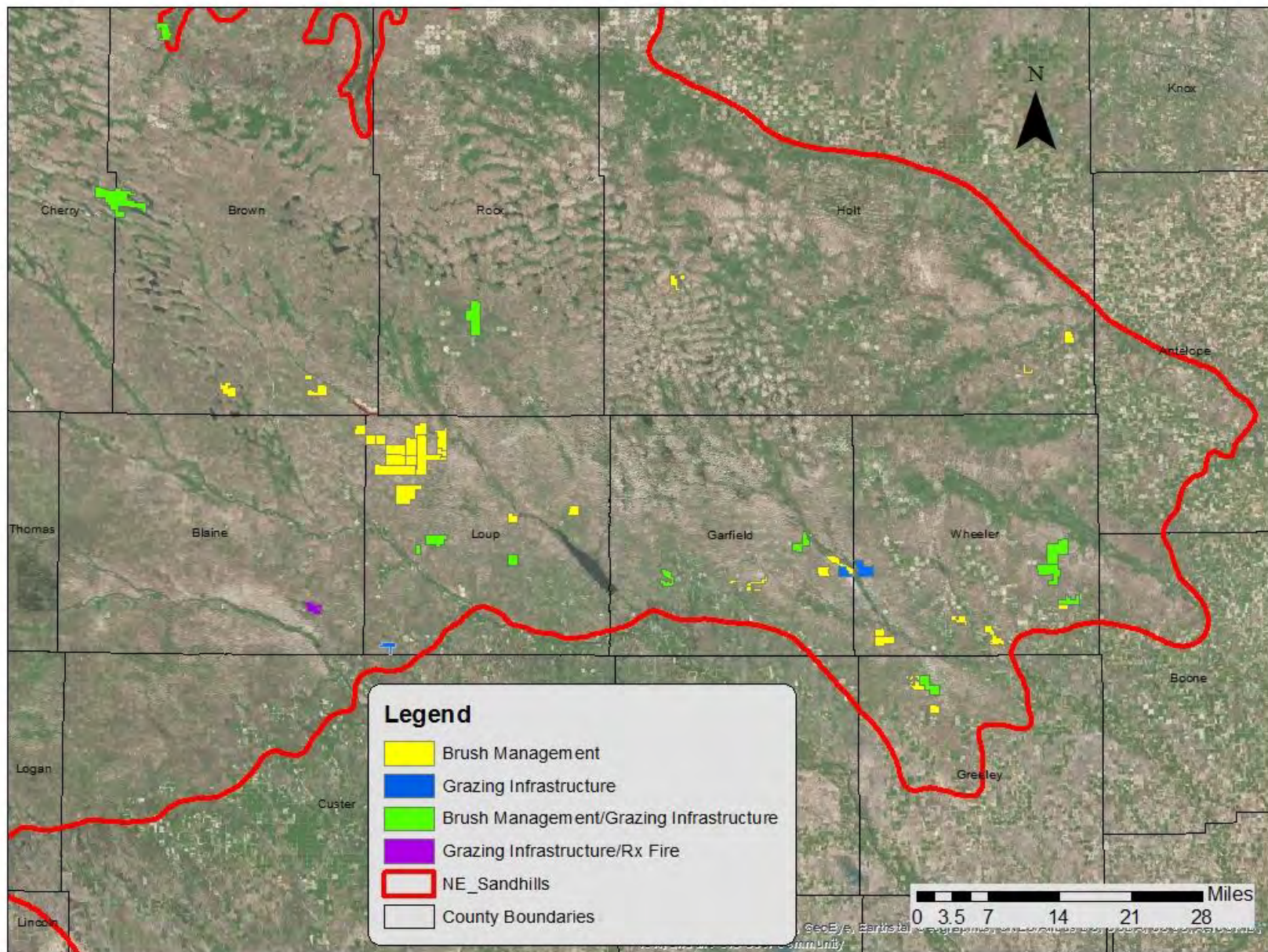
- **12 EQIP WLFW Projects**
 - **14,841.1 ac.**
 - **Projects include prescribed grazing systems, eastern red cedar removal, and prescribed burning.**
- * Impacted 40,836.1 ac. in 3 years of WLFW program.**



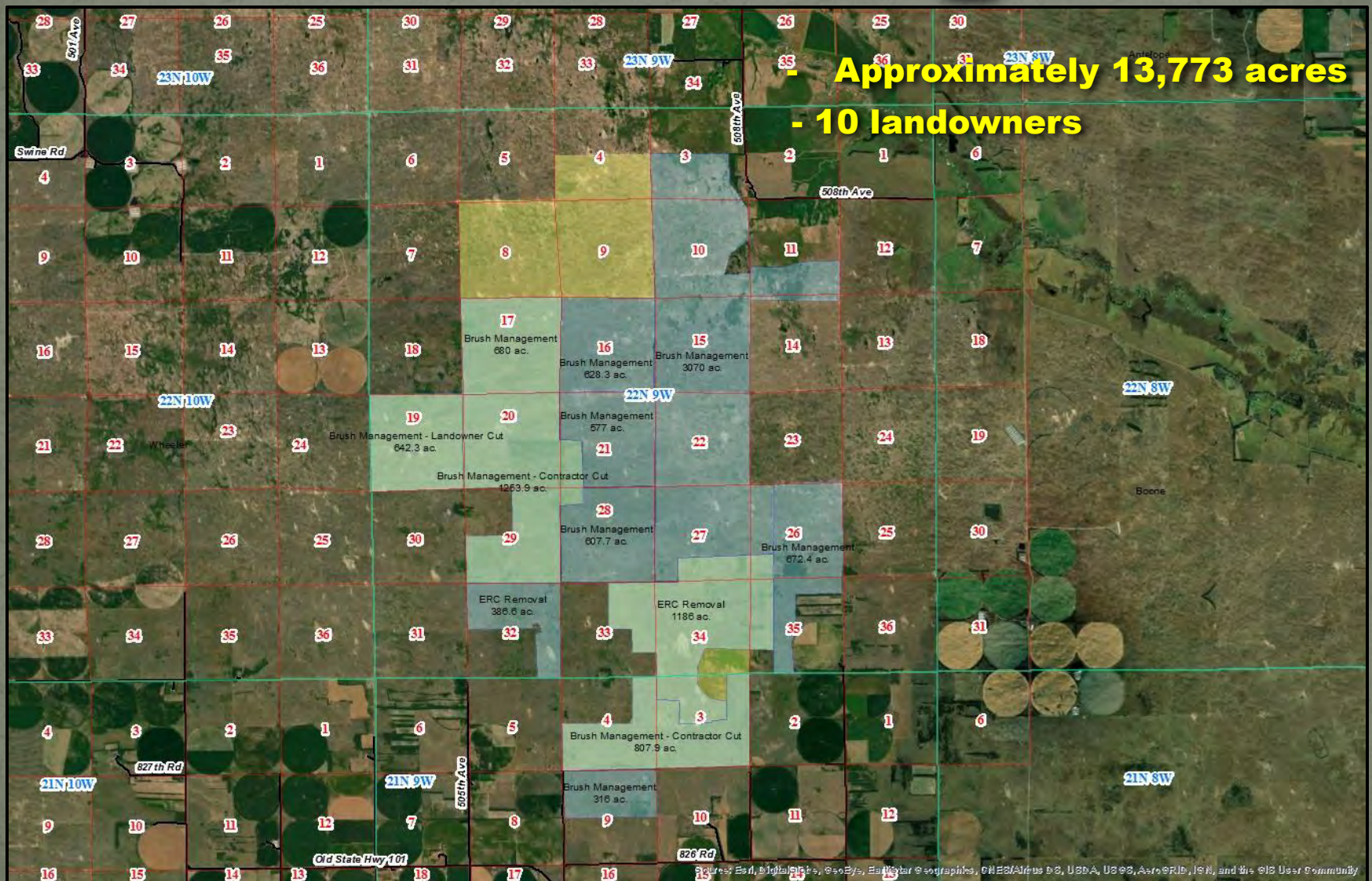
Partner Support

- **37 Projects**
- **48,741 ac of ERC removal**
- **20,281 ac of improved grazing systems**





Bartlett Complex



New Positions

- **Ryan Lodge – Working Lands Coordinator**
- **Lacey Clarke – Farm Bill Biologist**
- **TNC Burn Boss – Chad Bladow**



Questions

