

Working Wetlands Feeding Cows and Waterfowl in Nebraska's Rainwater Basin

Brian Shaw – Shaw Family Farms



A large flock of birds, likely shorebirds, is seen in flight over a wetland landscape. The birds are silhouetted against a pale, overcast sky. The ground is a mix of brown and green, suggesting a mix of dry and wet areas. The water in the foreground is dark and still.

Working Wetlands

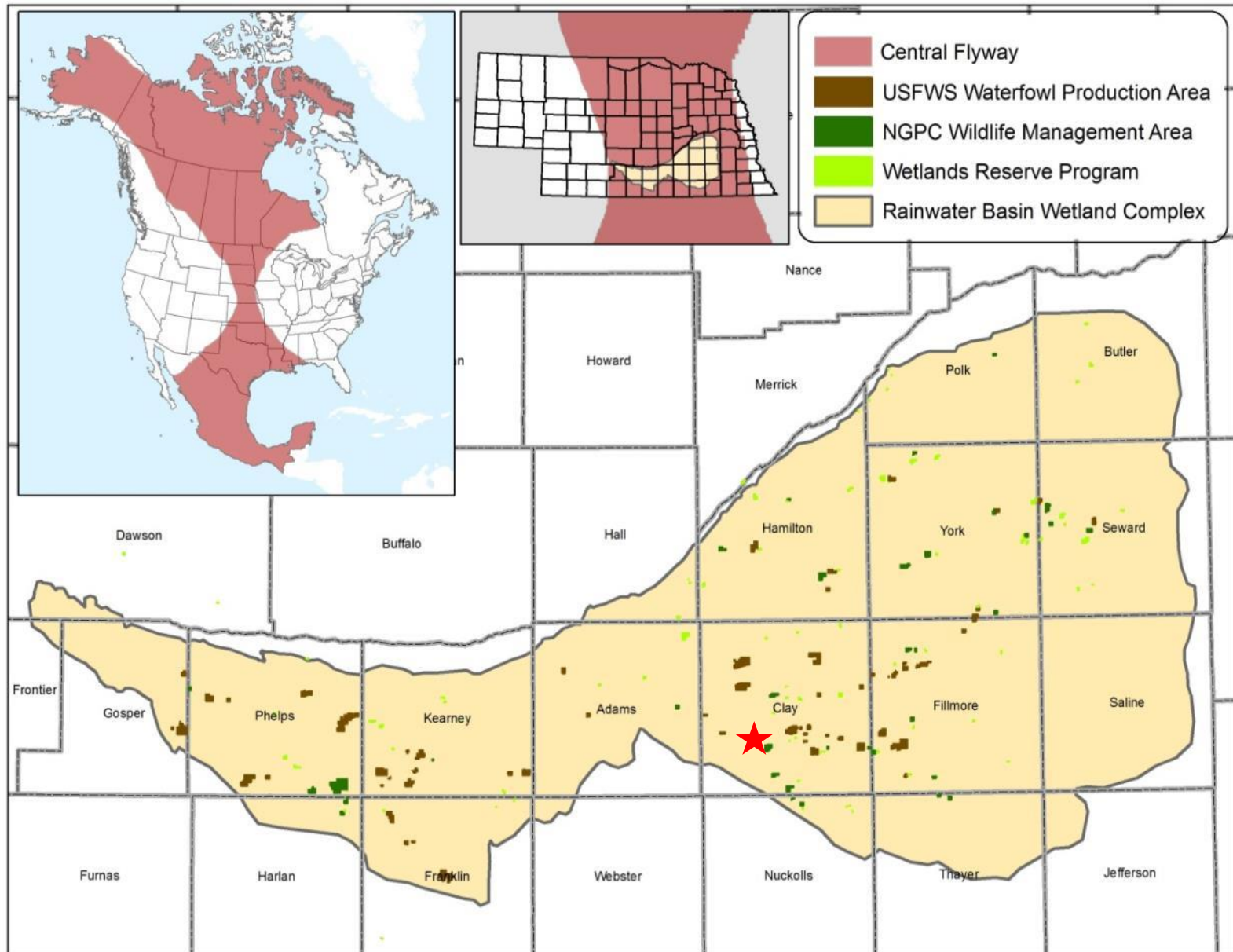
Integration of Wetlands into Farm Operations

Producer's Perspective

Today's Talk – History and changes in our operation

- Producers perspective of the landscape
- Public lands grazing
- Transition of flood-prone cropland into irrigated pasture
- Changes in herd dynamics
- Approaches taken to maximize animal health
- Educating other producers

Nebraska's Rainwater Basin





Feb 2008

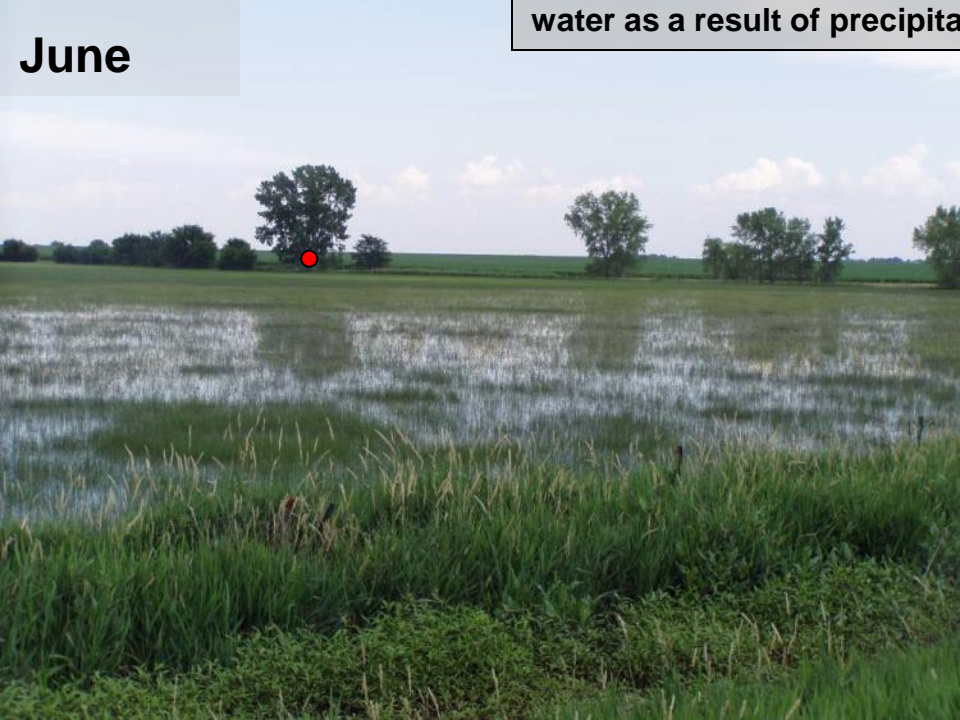


April

June

Rainwater Basin Wetlands are ephemeral, and pond water as a result of precipitation & surface runoff

September



Working Wetlands

Integration of Wetlands into a Rainwater Basin Farm Operation

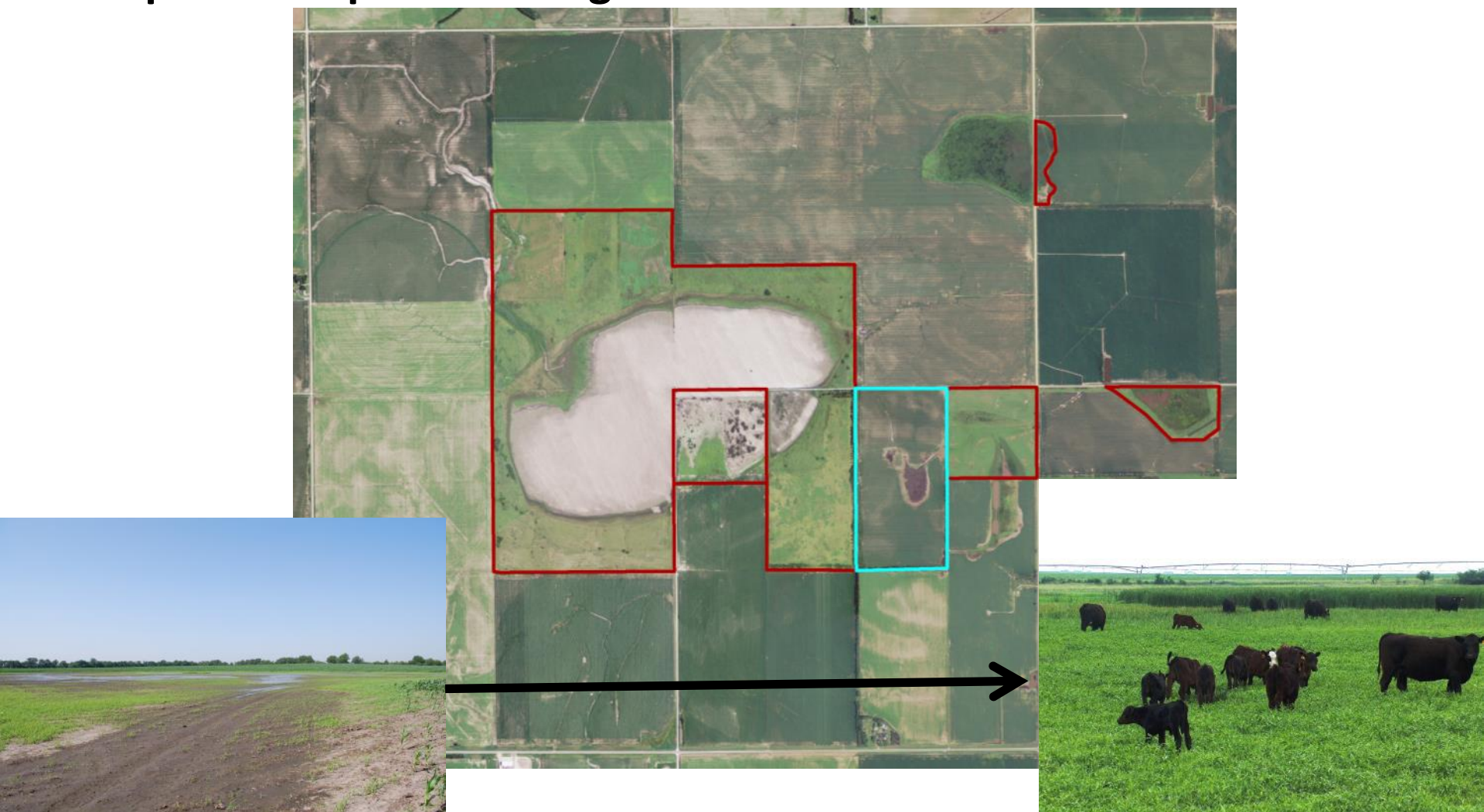
Public Lands Grazing



Working Wetlands

Integration of Wetlands into Farm Operations

Flood-prone Cropland to Irrigated Pasture



Working Wetlands

Integration of Wetlands into Farm Operations

Producer's Perspective

- Transition in herd dynamics
 - Initially one herd
 - Spring calving
 - Today three herds
 - Spring calving
 - Fall calving
 - Replacement heifers



Working Wetlands

Integration of Wetlands into the Farm Operation

- **Managing, Learning, Demonstrating**
 - **Portable Tube, Chute, and Alley – oversee checkout**
 - **Mineral Supplements – managing insects, animal health**
 - **Providing information to area grazers**
 - **Communicating with Agency Managers – learning what they want, educating them on what we need**



Questions

